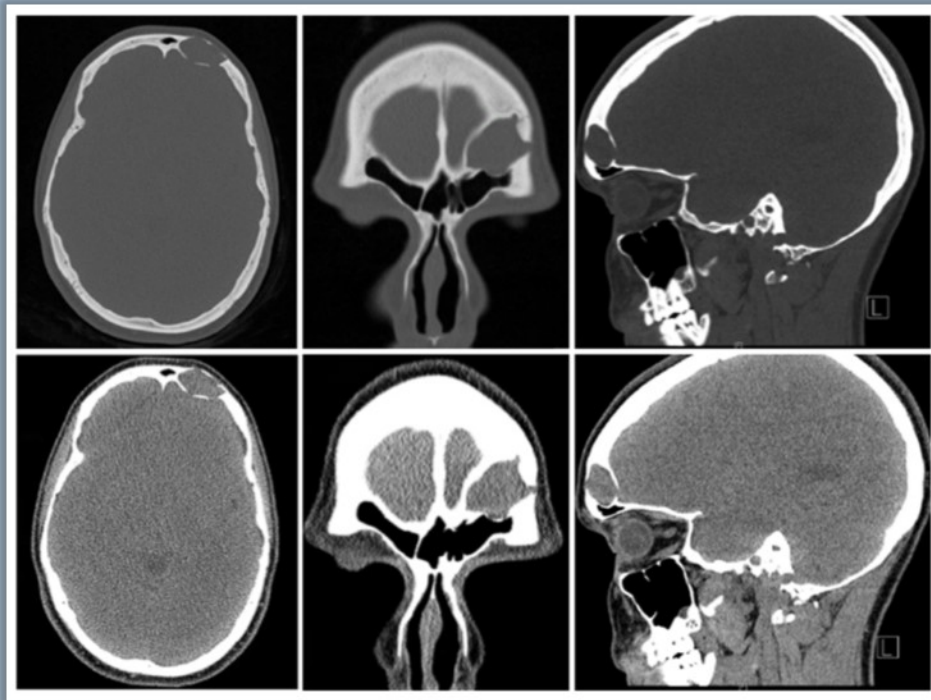


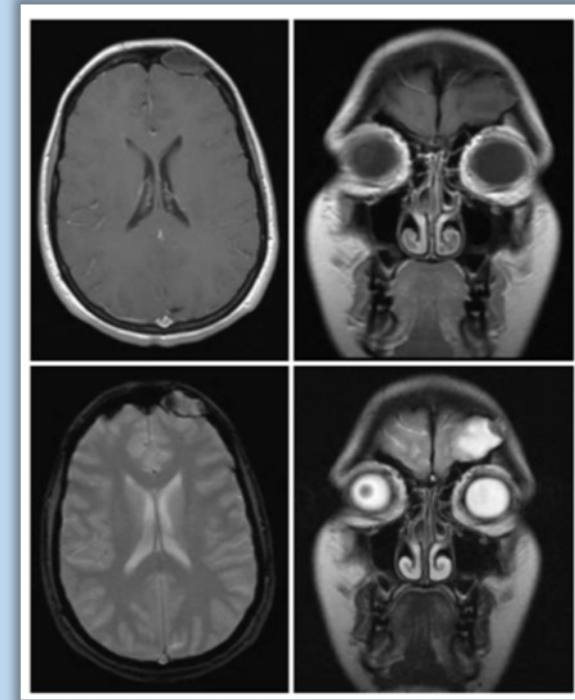
Management of Epidermal Inclusion Cyst within a Diploic Space

Tran Le MD, Vidur Bhalla MD, Alexander Chiu MD

Epidermoid cysts, while benign, can be locally destructive and cause symptoms secondary to mass effect. Optimal management of these lesions requires careful review of patient history, symptoms, and imaging



Left 2.2 x 2.5 x 1.7 cm intradiploic lesion of the frontal bone. Axial (left), coronal (middle), and sagittal (right) bone and soft tissue CT images



Axial and coronal MRI images of lesion that is isointense on T1 (top) and hyperintense on T2 (bottom)