

Directions to the Baby Lab at KU Medical Center

Child Development Lab (Baby Lab)
University of Kansas Medical Center
3901 Rainbow Boulevard
1044 Miller Building (Mail Stop 4003)
Kansas City, KS 66160
[913-945-8560](tel:913-945-8560)
babylab@ku.edu

If using GPS, enter the following address for Parking Lot 2 (P2) Garage:
2099 Olathe Blvd. Kansas City, KS 66103

Or use scan code with your GPS-enabled phone for directions.



Driving Directions from I-35

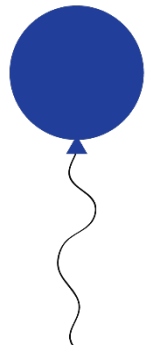
- Take the 7th St. Trafficway./Rainbow Blvd. exit (234A)
- Go south on Rainbow Blvd.
- Go up the hill and turn left (east) on Olathe Blvd.
- **The Parking Lot 2 (P2) Garage** is on the south side of the street, across from the Medical Office Building entrance

Parking

- Parking is free to visitors of the Baby Lab in the P2 Garage on Olathe Boulevard. (We will validate your parking pass.)
- If P2 Garage is full, use Parking Lot 3 (P3) Facility. Turn right out of P2 Garage. Take immediate left on Cambridge Street. The Cambridge Garage will be on your right, across from main hospital entrance. Call us ([913-945-8560](tel:913-945-8560)) and we will meet you at the hospital entrance.

Directions to the Lab

- Park in the **Public Parking Lot 2 (P2) Garage.**
- Exit the parking garage on Floor 1.
- Cross Olathe Boulevard and enter the Medical Office Building (MOB) main entrance (directly across the street from the P2 Garage).
- **Enter the MOB and follow the blue balloons to the Child Development Lab.**
- After entering the MOB, go through the double glass doors on your left, take the ramp on your right down to the double glass door entrance to the Miller Building.
- Upon entering Miller, walk past the KU Eye Clinic & Optical Shop on your left, and follow signs to the Child Development Lab. The family waiting area is **Room 1044.**



*** Parking Lot 2 (P2) Garage used to be called the Olathe II Parking Garage

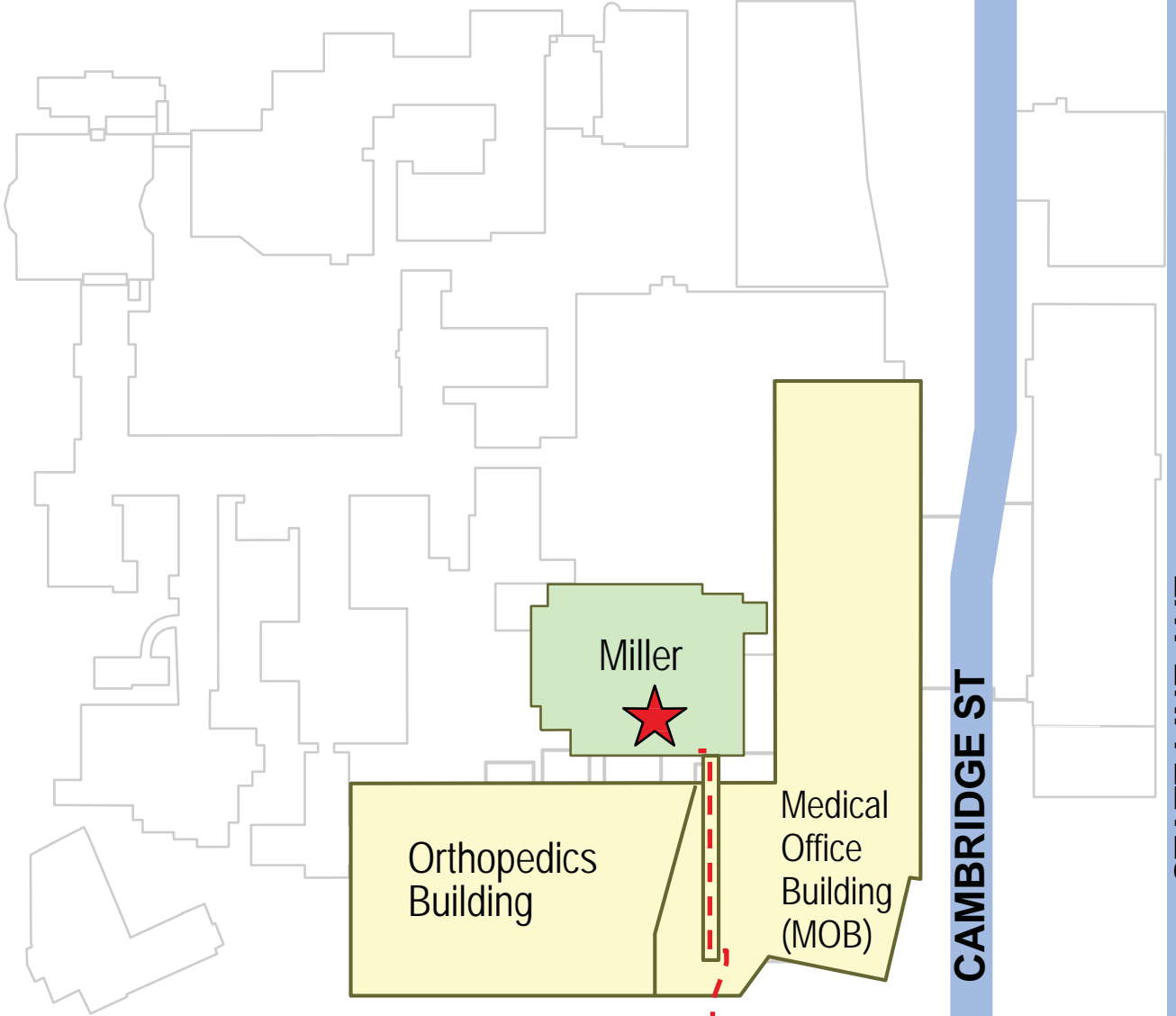


39TH ST



to I-35 and I-70

RAINBOW BLVD



Miller



Orthopedics Building

Medical Office Building (MOB)

CAMBRIDGE ST

STATE LINE AVE

OLATHE BLVD

Scan code below with your GPS-enabled phone for directions to Parking Lot 2 (P2) Garage
***it may still be called Olathe II on google maps



Public Parking Lot 2 (P2)

