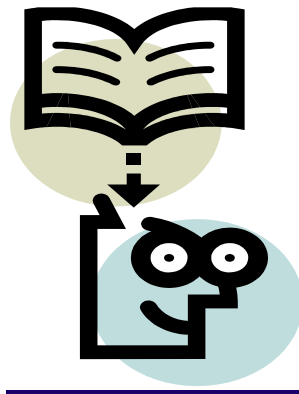


KAPLAN

Offered in KC: [provided by Sean Nickell](#)

Content Review	Description	List Price	Fall Price Valid until 1/29/10
<i>IntensePrep Complete</i>	This interactive, high-yield course offers 15 days of live lecture, NEWLY REVISED lecture notes , a Qbook with 850 practice questions and a test-taking strategy guide. Includes 9 months of access to approximately 100 hours of online video lectures (COMING November 17 th !), Qbank Plus, and 2 full-length simulated exams.	\$1,449 (6 mos.)	<input type="checkbox"/> \$1,149 (6 mos.)
<i>WebPrep Complete</i>	9 months of online access to approximately 100 hours of online video lectures (COMING November 17 th !). Includes NEWLY REVISED 7 volumes of discipline-based lecture notes , a Qbook with 850 practice questions and a test-taking strategy guide. Includes 9 months of access to Qbank Plus and two full-length simulated exams.	\$1,299 (6 mos.)	<input type="checkbox"/> \$1,099 (6 mos.)
<i>Home Study Complete</i>	4 Volumes (2 General Principles Books, 2 Organ System books) revised for 2008. A high-yield self-paced Step 1 review. Includes 6 months of Qbank Plus access and 1 full-length simulated exam.	\$999 (6 mos.)	<input type="checkbox"/> \$799 (6 mos.)
Question Review	Description	List Price	Fall Price Valid until 1/29/10
<i>Qbank Plus</i>	Includes more than 4,700+ challenging questions and 9 months of access! The ultimate question review option. Includes everything included in our regular Qbank plus a 336-question full-length simulated exam, our Step 1 Qbank (more than 2,400 challenging exam-style questions), and an additional 1,850 physiology and Integrated Vignettes-style questions. Also includes: 150q's diagnostic, page references to First Aid, audio / video teaching tab on 200 of our hardest questions, and multi-media questions!	\$399 (6 mos.) \$499 (12 mos.)	<input type="checkbox"/> \$349 (6 mos.)



FALCON

www.falconreviews.com

STEP 1 & LEVEL 1

Our *USMLE Step 1 & COMLEX Level 1* Review is a 7 week intensive course. During this course students will cover high yield material in BASIC SCIENCES. Here is an overview of how we cover the material:

Anatomy	3 Days
Neurology	3 Days
Behavioral Science	3 Days
Biochemistry	4 Days
Genetics	1 Day
Physiology	6 Days
Microbiology	4 Days
Immunology	2 Days
Pharmacology	5 Days
Pathology	6 Days
OMM Modules	Online (DO students only)



MAY 03 - JUNE 18, 2010 | DALLAS, TX

	Class	Price	Status
<input checked="" type="checkbox"/>	Double Occupancy*	\$4950.00	enroll now
<input checked="" type="checkbox"/>	Single Occupancy	\$6350.00	enroll now

MAY 17 - JULY 02, 2010 | Pittsburgh, PA

	Class	Price	Status
<input checked="" type="checkbox"/>	Double Occupancy*	\$4950.00	enroll now
<input checked="" type="checkbox"/>	Single Occupancy	\$6350.00	enroll now

DOCTORS IN TRAINING

[HTTP://DOCTORSINTRAINING.COM/ONLINE2010/](http://doctorsintraining.com/online2010/)

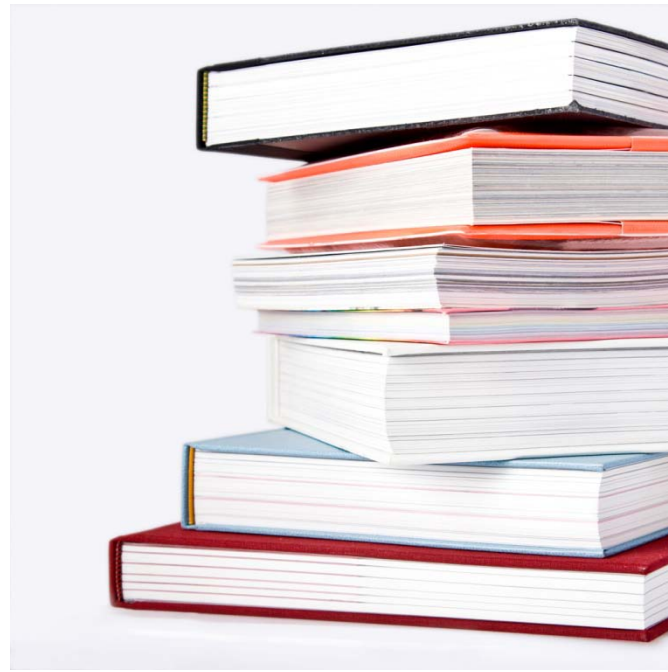
USMLE STEP 1 REVIEW - LIVE 2010

DoctorsInTraining.com USMLE Step 1 Live Course. Indicate city/dates of choice when prompted. Part I emails will begin 2/4/2009. Lecture handouts will be distributed on the first day of class. \$700.00

Galveston, Houston and Ft. Worth 5/10 – 5/28

USMLE STEP 1 REVIEW - ONLINE COURSE

DoctorsInTraining.com USMLE Step 1 Review Online Course. Available year round. Course notes will be mailed. Online access assigned on the business day you specify. Purchase allows access for one student only. \$700.00



Princeton Review Online for the USMLE Step 1

The *Online* USMLE course takes between 75 and 100 hours to complete and lasts 6 to 10 weeks depending on your pace and schedule.

This comprehensive package includes:

- 75 hours of online review, including lessons, vignettes, and drills
- Complete review of all USMLE Step 1 subjects
- 3 full-length CBTs
- 7 one-hour subject based tests
- Complete set of print materials, including:
 - 7 comprehensive review manuals - more than 1,500 pages
 - The Princeton Review Strategy Guide and Course Wrap-Up Guide
- Email support from expert instructors
- 24/7 real-time support from the Princeton Review Online Coach
- 3 months of access to tests, drills and lessons

What's in it for you?

- Help is Just a Click Away - 24/7 access to an Online Coach, plus student discussion groups, and email contact with an expert instructor
- Lively, Engaging Material - All lessons integrate animation, audio, and self-directed pacing
- Personalized Feedback - Diagnostic score reports and focused lessons
- Practice Tests and Tools - Print materials shipped via UPS to your home; plus access to over 100 highly interactive multimedia lessons, practice tests and subject-specific drills
- Free Tech Support - 24/7 support is provided by email or phone

Free Online Test

Still not convinced? See for yourself. View a sample lesson and take our one-hour, [free USMLE practice test](#).

Online Courses

Our online courses combine the best in technology and our proven test prep strategies. You'll prepare where, when, and how you want to prepare.

Program	Description	Fee		
▶ USMLE Online Course	Online Course	\$599	Save For Later	Enroll Now
▶ USMLE Online Workout	Online Workout	\$149	Save For Later	Enroll Now

PASS PROGRAM

Standard Program

4-week Program

Classroom lectures during the four weeks

One-on-one sessions with assigned tutor:

2 per week guaranteed; more provided when necessary or possible)

USMLE practice questions and tests (software available)

Unlimited use of the computer lab (during Center hours)

Tuition: **\$3,600**

Extended Programs

6-week Program

Classroom lectures held during the 6 weeks: The first 4 weeks are mandatory; the last 2 weeks are optional.

One-on-one session with assigned tutor:

2 one-hour sessions per week for the first 4 weeks

5 one hour sessions (if not attending all classes)

or 3 one-hour sessions (if attending all classes)

USMLE practice questions and tests (software available)

Unlimited use of computer lab (during Center hours)

Tuition: **\$5,400**

8-week Program

Classroom lectures held during the 8 weeks: Six weeks of classes are mandatory; the last two weeks of classes are optional.

One-on-one sessions with assigned tutor:

2 sessions per week for the first 4 weeks

3 sessions per week for the next 2 weeks

5 sessions per week (if not attending all classes)

or 3 sessions per week (if attending all classes) in the final 2 weeks

USMLE practice questions and tests (software available)

Unlimited use of computer lab (during Center hours)

Tuition: **\$7,200**

12-week Program

Classroom lectures held during the 12 weeks: Eight weeks of classes are mandatory; the remaining 4 weeks of classes are optional

One-on-one session with assigned tutor:

2 sessions per week for the first 4 weeks

3 sessions per week for the next 4 weeks

5 sessions per week for the last 4 weeks

USMLE practice questions and tests (software available)

Unlimited use of computer lab (during Center hours)

Tuition: **Call office for details**

PASS PROGRAM TV

Series Price : \$2999.95

[Buy Video Series](#)

Group	Topics	Group Price	Solo Price	Details
1	LOW ENERGY STATE	\$100.00	\$50.00	More Details
	VITAMINS, MINERALS & TRACE ELEMENTS		\$50.00	
	Welcome to PASS		\$1.00	
2	CELLULAR PHYSIOLOGY 1	\$200.00	\$100.00	More Details
	CELLULAR PHYSIOLOGY 2		\$100.00	
3	BEHAVIORAL SIGNS	\$200.00	\$70.00	More Details
	PERSONALITY DISORDERS		\$70.00	
	PHARMACOLOGY/SEXUAL DEVIANCE		\$70.00	
4	INFLAMMATION	\$100.00	\$100.00	More Details
5	TEST TAKING STRATEGY	\$100.00	\$100.00	More Details
6	ENDOCRINOLOGY 1	\$300.00	\$100.00	More Details
	ENDOCRINOLOGY 2		\$100.00	
	ENDOCRINOLOGY 3		\$100.00	
7	MEMBRANE PHYSIOLOGY 1	\$200.00	\$100.00	More Details
	MEMBRANE PHYSIOLOGY 2		\$100.00	

8	ELECTROLYTE PHYSIOLOGY 1	\$100.00	More Details
	ELECTROLYTE PHYSIOLOGY 2	\$100.00	
		\$200.00	
9	VASCULAR PHYSIOLOGY 1	\$100.00	More Details
	VASCULAR PHYSIOLOGY 2	\$100.00	
	WHAT IS A VASCULITIS?	\$100.00	
		\$300.00	
10	NEUROMUSCULAR PHYSIOLOGY 1	\$100.00	More Details
	NEUROMUSCULAR PHYSIOLOGY 2	\$100.00	
		\$200.00	
11	THE CLOTTING CYCLE	\$100.00	More Details
		\$100.00	
12	GASTROINTESTINAL PHYSIOLOGY 1	\$75.00	More Details
	GASTROINTESTINAL PHYSIOLOGY 2	\$75.00	
	GASTROINTESTINAL PHYSIOLOGY 3	\$75.00	
	GASTROINTESTINAL PHYSIOLOGY 4	\$75.00	
		\$300.00	
13	SURGERY PRINCIPALS 1	\$100.00	More Details
	SURGERY PRINCIPALS 2	\$100.00	
		\$200.00	
14	CARDIAC PHYSIOLOGY 1	\$120.00	More Details
	CARDIAC PHYSIOLOGY 2	\$120.00	
	CARDIAC PHYSIOLOGY 3	\$120.00	
		\$350.00	
15	PULMONARY PHYSIOLOGY 1	\$100.00	More Details
	PULMONARY PHYSIOLOGY 2	\$100.00	
	PULMONARY PHYSIOLOGY 3	\$100.00	
		\$300.00	

16	RENAL PHYSIOLOGY	\$90.00	More Details
	BODY WATER	\$90.00	
	RENAL FAILURE 1	\$90.00	
	RENAL FAILURE 2	\$90.00	
		\$350.00	
17	CARDIAC PATHOLOGY	\$100.00	More Details
		\$100.00	
18	NEUROPHYSIOLOGY 1	\$120.00	More Details
	NEUROPHYSIOLOGY 2	\$120.00	
	NEUROPHYSIOLOGY 3	\$120.00	
		\$350.00	
19	BIOCHEMISTRY 1	\$120.00	More Details
	BIOCHEMISTRY 2	\$120.00	
	BIOCHEMISTRY 3	\$120.00	
		\$350.00	
20	PROTEIN STRUCTURE AND FUNCTION 1	\$85.00	More Details
	PROTEIN STRUCTURE AND FUNCTION 2	\$85.00	
	PROTEIN STRUCTURE AND FUNCTION 3	\$85.00	
	PROTEIN STRUCTURE AND FUNCTION 4 and 5	\$85.00	
	PROTEIN STRUCTURE AND FUNCTION 6	\$85.00	
	PROTEIN STRUCTURE AND FUNCTION 6	\$85.00	
		\$500.00	
21	CATABOLIC PATHWAYS 1	\$90.00	More
	CATABOLIC PATHWAYS 2	\$90.00	
	CATABOLIC PATHWAYS 3	\$90.00	
	CATABOLIC PATHWAYS 4	\$90.00	
	CATABOLIC PATHWAYS 5	\$90.00	
	CATABOLIC PATHWAYS 6	\$90.00	
	CATABOLIC PATHWAYS 7	\$90.00	
	CATABOLIC PATHWAYS 8	\$90.00	
		\$700.00	

			Details
22	REPRODUCTIVE ENDOCRINOLOGY 1	\$125.00	
	REPRODUCTIVE ENDOCRINOLOGY 2	\$125.00	
		\$250.00	More Details
23	OBSTETRICS/GYNECOLOGY 1	\$125.00	
	OBSTETRICS/GYNECOLOGY 2 (1st and 2nd half- no fast forward)	\$125.00	
		\$250.00	More Details
24	PEDIATRICS 1	\$100.00	
	PEDIATRICS 2	\$100.00	
	PEDIATRICS 3	\$100.00	
		\$300.00	More Details
25	PHYSIOLOGY OF CANCER 1	\$60.00	
	PHYSIOLOGY OF CANCER 2	\$100.00	
	PHYSIOLOGY OF CANCER 3	\$60.00	
	PHYSIOLOGY OF CANCER 4	\$60.00	
	PHYSIOLOGY OF CANCER 5	\$60.00	
		\$300.00	More Details
26	IMMUNOLOGY 1	\$75.00	
	IMMUNOLOGY 2	\$75.00	
	IMMUNOLOGY 3	\$75.00	
	IMMUNOLOGY 4	\$75.00	
	IMMUNOLOGY 5	\$75.00	
	IMMUNOLOGY 6	\$75.00	
	IMMUNOLOGY 7	\$75.00	
		\$500.00	More Details
27	RHEUMATOLOGY	\$100.00	
		\$100.00	More Details
28	MICROBIOLOGY 1	\$100.00	
	MICROBIOLOGY 2	\$100.00	

MICROBIOLOGY 3	\$100.00
FUNGI (1st and 2nd half- no fast forward)	\$100.00
VIRUSES	\$100.00
\$500.00	
More	
Details	

Series Price : \$2999.95 [Buy Video Series](#)



NORTHWESTERN MEDICAL REVIEW

<http://northwesternmedicalreview.com/index.php?inc=usmlei>

Standard Tuition Rates

Live Lecture Review Courses		
3 Day + Books	(Step/Level I)	\$395
4 Day + Books	(Step/Level I)	\$495
5 Day + Books	(Step/Level I)	\$595
8 Day + Books	(Step/Level I)	\$995
10 Day + Books	(Step/Level I)	\$1095
12 Day + Books	(Step/Level I)	\$1215
14 Day + Books	(Step/Level I)	\$1365
15 Day + Books	(Step/Level I)	\$1465

QBank Access		
1 Month of Access		\$75
2 Months of Access		\$95
3 Months of Access		\$110
4 Months of Access		\$125
5 Months of Access		\$135

6 Months of Access

\$145

Video Library Access

1 Month of Access + Study Materials	(Step/Level I Complete Review)	\$590
2 Months of Access + Study Materials	(Step/Level I Complete Review)	\$660
3 Months of Access + Study Materials	(Step/Level I Complete Review)	\$720
1 Month of Access + Study Materials	(Step/Level I One Subject Review)	\$150
2 Months of Access + Study Materials	(Step/Level I One Subject Review)	\$199

Hard Copy Study Materials and Books

NBI 100 (3-Day) Materials	(Step/Level I)	\$245
NBI 150 (4-Day) Materials	(Step/Level I)	\$325
NBI 200 (5-Day) Materials	(Step/Level I)	\$325
NBI 300 (8 to 15-Day) Materials	(Step/Level I)	\$415

INSTITUTE FOR BOARD PREP

USMLE / COMLEX: STEP ONE

All Step One programs are four weeks, and some programs offer an optional extended two weeks.

We cap the class at 20 students, so please register early to ensure your spot.

Our dates are:

Monday, May 3rd - Friday, May 7th, 2010.

"Questions, questions and more questions."

Because of our unique and exclusive "method[®]" in answering board-style questions, this program is formulated for students who are comfortable with their knowledge and would like to achieve their full potential on the USMLE examination. Students will learn how to use accurate comprehension when working board-style questions. During this one week session, you will develop a thorough understanding of how questions are written, and how to differentiate between what information is needed from the question stem that supports the correct answer, and how to identify the distractors. Our "method" also provides a way to approach answer choices, and how to select the correct answer when you get it down to two possible options. No live lectures, but review is covered every day. Students learn how to identify and apply their knowledge as it pertains to the clinical picture of the question at hand. The cost of this program is \$1450.00. Housing is not included.

***Monday, May 17th - Friday June 11th, 2010.**

This program offers live lectures presented by PhDs and MDs. Cost: 3000.00. Includes diagnostic testing and a full day Mock Board Examination. Housing is not included.

*This program has an optional two weeks extension.

The extension dates are: Monday, June 14th - Friday, June 18th. The cost of the extra two weeks is \$1450.00.

September 2010 dates coming soon.

If you are unable to attend any one of our programs, please send us an email stating when you are available, and we will make alternative arrangements to accommodate you.