

UNIVERSITY OF KANSAS MEDICAL CENTER

WINDOWS XP AND VISTA

SSL VPN INSTRUCTIONS

Installation Notes:

“Administrative” rights are required on your PC to install the SSL VPN client.

Please make sure All Pop-up blockers are disabled before installation!

If you have Questions or problems with the installation please call 913-588-7995.

Installation

1. Browse to <https://vpn.kumc.edu> and then enter your University username and password.



Please enter your username and password.

USERNAME:

PASSWORD:

2. After reading the Legal Banner click “Continue”.

Access to the University of Kansas Medical Center network is restricted to employees, students, or other individuals authorized by KUMC or its affiliates. Use of this system is subject to all KUMC policies and procedures located at <http://www2.kumc.edu/security>. Unauthorized use is prohibited and will result in administrative or legal action. KUMC monitors the use of this system for purposes related to security management, system maintenance, system troubleshooting, and license compliance.

3. The installation program will start and detect the browser being used. Based on the detection you will see similar screens to those below. Examples given are from an Internet Explorer (ActiveX) and FireFox (Java) installation.

Click Download to Continue.

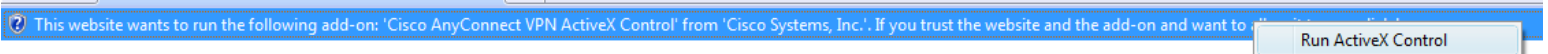


Internet Explorer (ActiveX startup)



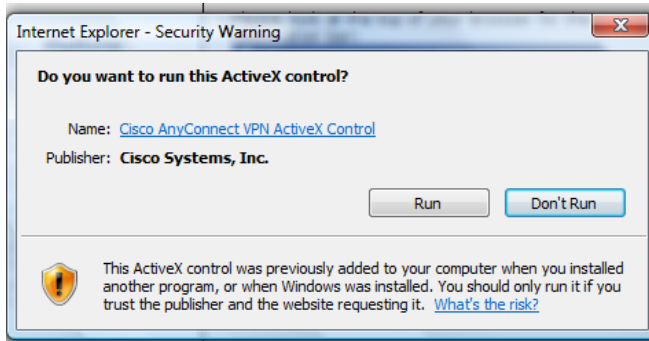
Firefox (Java version detection)

4. Internet Explorer users: click the white bar that appears at the top of the screen and then choose “Install ActiveX Control...”. Depending on browser settings you may also be prompted to “Run ActiveX Control” as well.

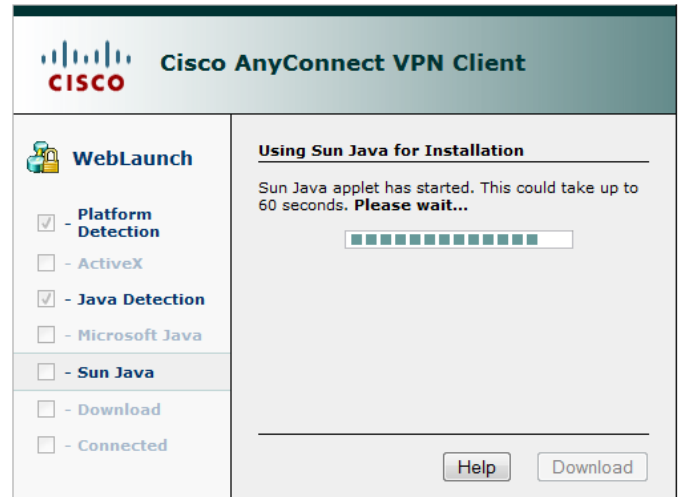


5. Internet Explorer users will see one of the two Security Warning prompts below. Depending on which prompt appears, select “Run” or Install. Other browsers will load the Java applet.

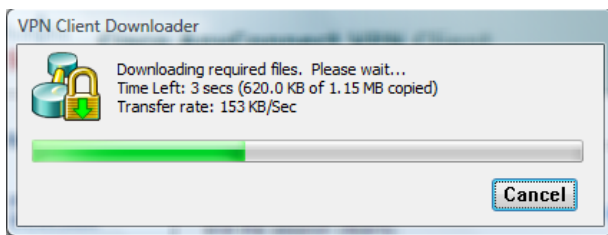
Internet Explorer



Firefox



6. The VPN Client will now download and install to your pc.



7. Once the installation is complete you will be connected to the KU Medical Center Campus! You may close the Internet browser and will continue to be connected to the University VPN.

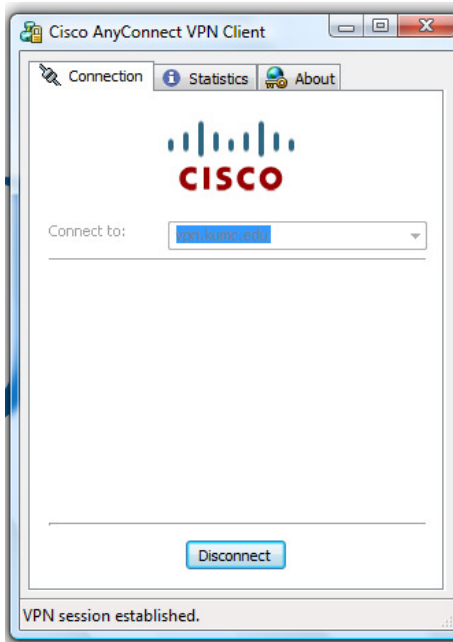


Disconnecting from the University VPN

To check your status or disconnect, double click the VPN Icon in the taskbar (near the clock.)



in the

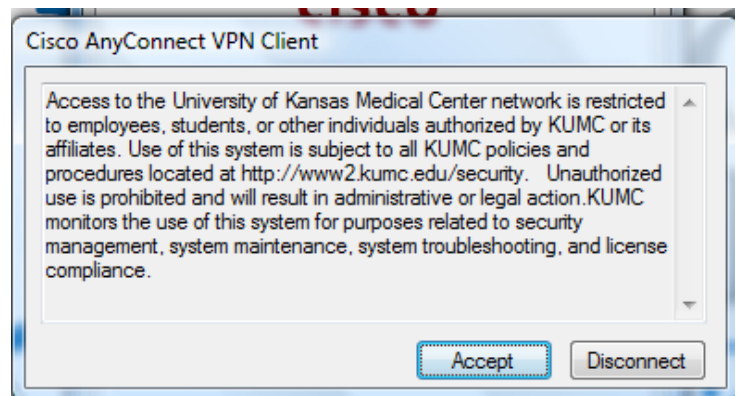
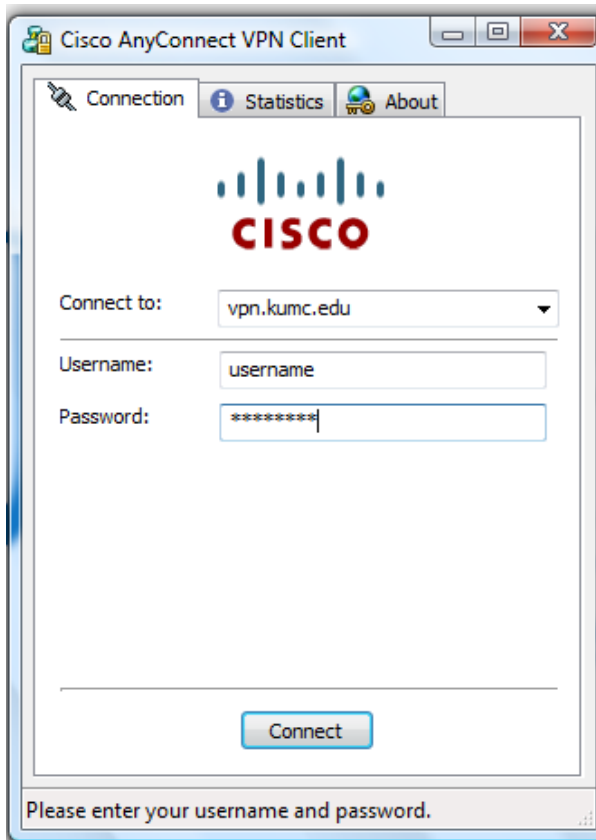


Reconnecting

1. To reconnect at a later time, you can browse to the Cisco folder in your Start Menu and click Cisco AnyConnect VPN Client.



2. Enter your University username and password and press Connect. When prompted, press Accept after reading the Legal banner. After connecting, the client will check to see if a new version of the client is available. If a new client is available, it will automatically be installed.



2. You are now connected to the KU Medical Center Campus!