



HEARTLAND NEWS

HEARTLAND CHAPTER
ACADEMY OF CERTIFIED HAZARDOUS MATERIALS MANAGERS

March 2004

Volume 11, Number 2

March Meeting

Date: March 23, 2004

Location:

Machine Shed
12080 Strang Line Rd
Olathe, Kansas (take
the 119th St exit off of
I-35)

Cost: \$18.00/person

Time:

5:00 pm board
6:00 p.m. meal/mtg

RSVP:

Ben Gudde
816-792-6206 or,
BGUDEE1@Hallmark.com

Speaker:

Chet Culley, General Mng'r
Env/Hazardous Materials,
Kansas City Southern
Railway Company, will
demonstrate a CGI
simulation of a train
derailment used as an
interactive training module
for railroad HAZMAT
responses

PRESIDENT'S NOTES

by Phil Dula, CHMM, PG

I am extremely honored to serve as your President of the Heartland CHMM Chapter for 2004. As a CHMM since 1993 I only recently became involved in our Chapter several years ago. In the past I attended meetings periodically but never became what anyone would consider an active member. The last several years have taught me a valuable lesson... Get Involved! My goal this year is to see our membership grow but more importantly to see more of our members become involved. Our continued success as a professional organization depends on the input, active participation, and commitment from our members and not just our Board members. I have observed over the past three years that our Chapter has depended solely on the leadership, effort, and involvement of a core of Heartland Chapter members. As a group we can do much better! We all have demanding jobs, family responsibilities, and other after work activities but some of us still find the time to keep our Heartland Chapter moving forward. I would like everyone in our Chapter to take a moment and reflect on how they might be able to better support the growth and visibility of our Chapter. It would be wonderful to see our Chapter recognized at an upcoming National CHMM Conference as one of the top CHMM groups in the country.

We presently have several committees that consist of one person or no one at all. Obviously it is difficult to accomplish our goals without the support of our members stepping up to fill these committee vacancies. I urge you to contact me or one of our Committee Chairs to see how you can help your CHMM Heartland Chapter by supporting these committees. Our Committees and respective Chairs are:

Scholarship Committee

Chair: Phil Dula (913) 317-2631
Members: Timberlyn Smith, Ken Grist,
and Mike Stanfill

Golf Tournament Committee (Scholarship Fund Raiser)

Chair: Phil Dula (913) 317-2631
Members: Steve Heard and Kallie Pazdera

Membership Committee

Chair: Kallie Pazdera (816) 474-1391
Members: 0

Education Committee

Chair: Ken Grist (816) -822-3940
Members: 0

Government Affairs Committee

Chair: Vacant
Members: 0

Community Outreach

Chair: Sara Crafton (913) 315-8624
Members: Venessa Pottie

Our Committees are presently designing a new paradigm for an annual scholarship program. In addition our respective committees are also planning to participate in an Earth Day Event; planning our 2nd Scholarship Golf Tournament Fund Raiser; preparing for presenting our annual CHMM Exam Review Course, and investigating ways to advance the recognition of the CHMM certification among other professional groups and in the regulatory community. We will need your help to make each of these a success.

Again I ask for a greater commitment from our members to get involved. You will enrich your lives by becoming involved with a great organization, meeting good people, making new friends, and expanding your knowledge. Let us all together make 2004 a great year!

CHEMICAL ACCIDENT PREVENTION PROGRAM WORKSHOP

On April 21, 2004, the Associated Industries of Missouri (AIM) will be hosting a workshop in conjunction with the 2004 Region VII Environmental Conference in which representatives from the U.S. EPA will present a program covering: requirements for 5-year update to risk management plans; changes to the regulations at 40 CFR Part 68; EPA's expectations regarding implementation of prevention programs; and EPA's compliance assistance and inspection programs. Please join AIM in Kansas City, Missouri for this important event. For additional information on how to register for the workshop, you obtain a copy of the brochure at <http://www.aimo.com/events/chemwork.pdf>.

Fun Fact #1

New Year's Day is the world's most observed holiday. In most English-speaking countries, it has been observed on January 1 since the British Calendar Act was passed in 1751. There was a time when people wished others a "Happy New Year" on March 25, approximately the date of spring's onset.

2004 REGION VII ENVIRONMENTAL SYMPOSIUM

Regulated Industry, Utilities & Manufacturers, do not miss this important event!

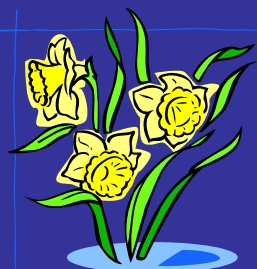
**April 20-21, 2004
The Fairmont Kansas City at the Plaza
401 Ward Parkway
Kansas City, Missouri
(816) 756-1500**

The agenda for the 2-day symposium includes such topics as:

Region VII: A River Once Ran Through It
Savvy Spill Reporting: Let's Not Go Crazy Here
Rethinking "Waters of the State" – Beyond SWANCC
Remind Me Again...Why I Volunteered to Clean Up this Site!
Complying with Permit Reporting Requirements
Tips on Designing Yourself Out of a Compliance Problem
Permit-by-Rule: How Can Something so Sensible Take so Long?
New Source Review: Now for the Rest of the Story
Sustainability...Schmustainability: A Separate Reality
Regulator Face-Off: A Time for Q&A

This year's keynote speaker will be Bruce Buckheit, former Director of Air Enforcement, USEPA. For a full conference agenda, or to get a copy of the registration brochure, go to <http://www.aimo.com/events/04RegionVIIProgram.pdf>

For more information on any AIM seminars, contact Jan Schanbacher at (573) 634-2246, or e-mail her at jschanbacher@aimo.com





Fun Fact #2

Bees must collect nectar from two million flowers to make a one-pound comb of honey.



Fun Fact #3

Denver, Colorado, has 300 days of bright sunshine a year – more annual hours of sun than San Diego, California or Miami Beach, Florida.

KS SBEAP - TIP OF THE MONTH

It is a new year...do you need to provide hazardous waste handlers training at your facility?

As a Kansas generator, you need to ensure that all of your employees are thoroughly familiar with proper waste handling. The Kansas Small Business Environmental Assistance Program (SBEAP) has recently published a training program for Kansas generators designed to help businesses and industries in the state to meet their employee training responsibilities as required by Kansas Administrative Regulations (KAR) 28-31-4 (h) (6,8, and 9). Utilize this free tool via our Web site at www.sbeap.org, and then simply click on training. Once you have completed this or any other related training, maintain documentation of it for your RCRA records.

E-tips is a service of the Kansas Small Business Environmental Assistance Program (SBEAP). Contact SBEAP at 800-578-8898 or sbeap@ksu.edu for confidential, environmental compliance and pollution prevention assistance.

EMPLOYMENT OPPORTUNITY

The Kraft Foods facility in Kirksville Missouri is currently looking for a Safety Specialist. The position is responsible for the direct development, implementation, and monitoring of safety and risk programs for the production facility. The successful candidate will provide a strong leadership role in the coordination of safety action plans including continued certification in the OSHA VPP star program, and the cultivation of a safety perfect culture. This position is the primary contact for all aspects of workers compensation, security, and safety compliance.

The ideal candidate will have a bachelor's degree in a safety related field with experience in the safety function in a manufacturing environment and proven leadership and communication skills and a willingness to work in a fast paced dynamic environment that operates 24hours a day, seven days a week.

Interested candidates should submit their resume along with salary history to:

Kraft Foods
2504 North Industrial Road
Kirksville, MO 63501
Attn: Tim Anderson
tim.Anderson@kraft.com

Fax: 660-627-2062

Did You Know?

Lead poisoning has been blamed for contributing to the fall of the Roman Empire. Women became infertile by drinking wine from vessels whose lead had dissolved in the wine, & the Roman upper classes died out within a couple centuries. The Romans used lead as a sweetening agent and as a cure for diarrhea. It added up to massive self-inflicted poisoning.



"The best prescription is knowledge."
- Dr. C. Everett Koop,
M.D.

UPCOMING EVENTS

March 9 – 11, 2004 – Hyatt Regency Hotel, Kansas City, Missouri EPA Region 7 Wetlands & Water Resources Meeting

For additional information regarding registration and the Call for Papers, go to:
www.ctic.purdue.edu/eparegion7wetlandsmeeting

April 1, 2004 – Engineer's Club, St. Louis, Missouri Gateway Society Hazardous Materials Managers' 2004 Regulatory Update Seminar

Contact Arlene Farrar at (636) 226-3094 / Arlene.Farrar@Bausch.com if you are interested in attending, or have a topic or speaker you'd like to offer.

April 20 – 21, 2004 – Fairmont on the Country Club Plaza, Kansas City, Missouri EPA Region 7 Environmental Symposium

For additional information regarding sponsorships, exhibiting, or registration, go to:
www.aimo.com/events.htm or contact Jan Schanbacher at 573-634-2246

May 3 – 6, 2004 – Adams Mark Hotel, St. Louis, Missouri Midwest Security & Preparedness Conference and Exhibition

USEPA, St. Louis LEPC, and Region 5 TRANSCAER are hosting a conference which will bring together many organizations responsible for drinking water security. There is no registration fee to attend, but registration is limited to 400 attendees. Online registration is available at www.mwsecurityconf.com. Those interested in exhibiting should contact Kristina Schuchman or Becky Dix at (314) 966-1006 or at klschuch@hotmail.com.

May 3 – 7, 2004 – Tan-Tar-A Resort, Osage Beach, Missouri Mid-America Safety, Health & Environmental Conference & Exposition

50 plus seminars and conference sessions! ASP, CSP and CHMM Exam Review Workshops May 3-5; Conference & Expo May 6-7 For information about exhibiting, contact the MO Safety Council at 573-636-8167, or e-mail mofafety@socket.net. For information on conference registration and agenda updates, visit www.missourisafetycouncil.org. For room reservations, call Tan-Tar-A at 800-826-8272

June 27 – 29, 2004 – Lodge of the Four Seasons, Lake of the Ozarks, Missouri 31st Annual Missouri Waste Management Conference

The Missouri Waste Control Coalition (MWCC) is currently seeking speakers to present new and exciting ideas in panel discussions of 15 to 30 minutes. The Call for Papers deadline is March 15, 2004. If you have a new program, technology, process, or resource to share with the world of waste, you are urged to contact Cliff Metcalf at (314) 647-8338 or cliff@tririnse.com

IT'S TIME TO PLANT TREES

Before you break ground, make sure you're planting the right tree in the right place. The Right-Tree-in-the-Right-Place is a joint public-private initiative to encourage proper tree planting and care. Visit their website at <http://www.righttreerightplace.com/> for some very helpful information and other, helpful contacts.

Fun Fact #4

The composition of honey consists of varying proportions of fructose, glucose, water, oil and special enzymes produced by bees. “Field” bees fly from flower to flower collecting the nectar with their tongues and they store it in sacs within their bodies. The field bees then return to the hive to regurgitate the stored nectar into the mouths of “house” bees. The house bees add enzymes from their bodies to the nectar causing the water in the nectar to evaporate- thereby turning the nectar into honey. The nectar is stored in a cell of a honeycomb, and overtime, it ripens and becomes honey.

“ALL APPROPRIATE INQUIRY” PROPOSED DEFINITION UNDER CERCLA

The Small Business Liability Relief and Brownfields Revitalization Act (the “Brownfields Law”), signed by President Bush in January 2002, amended the “Innocent Landowner Defense” under CERCLA. The Brownfields Law required EPA to develop regulations to establish standards and practices for conducting “all appropriate inquiry”, commonly known as “due diligence”, in order to secure CERCLA’s innocent owner protections. A major step toward that goal was completed in December 2003 when a negotiated rulemaking committee convened by EPA reached consensus on a proposed rule. Publication of the proposed rule in the Federal Register should occur sometime this Spring, followed by a 90-day public comment period.

The “all appropriate inquiry” definition/standards are designed to demonstrate that the purchaser actively investigated any potential or actual hazardous substance or petroleum product releases before purchasing the property. If no releases are discovered during the assessment, the purchaser is deemed an “innocent owner”.

The Brownfields Law designated the ASTM Standard Practice for Phase I Environmental Site Assessment (the “ASTM Phase I Standard”) as the interim technical standard until a final rule was promulgated. Once adopted, the new standard will replace the ASTM Phase I Standard for purposes of the Brownfields Law. The proposed standard will require a borrower to conduct a more involved assessment than is currently conducted under the ASTM Phase I Standard. Under the new standard the qualifications to conduct inquiries as an “environmental professional” are more strictly defined and will require such individuals to have a more enhanced education background and/or greater field experience.

The proposed regulation could result in significant short-term impacts in the commercial real estate and Brownfields redevelopment markets. The proposed regulation will require compliance training and education of both lenders and borrowers, and can be expected to increase the time and expense involved in completing real estate transactions. Also, a purchaser seeking a grant from EPA to redevelop Brownfield property will be required to satisfy the “all appropriate inquiry” definitions/standard in order to qualify for the grant.

VOLUNTEERS NEEDED

On Saturday, April 17 from 8 a.m. to 2 p.m., the Overland Park Environmental Advisory Council and the City of Overland Park will sponsor Stream Clean 04. This annual event helps restore the natural beauty of Overland Park streams by removing trash and debris. They are looking for individuals and groups to help. The City provides all supplies and each participant receives an event t-shirt. If you can donate two or more hours, call Jim Twigg at 913/895-6273 or e-mail jim.twigg@opkansas.org.

The Overland Park Environmental Advisory Council and the City of Overland Park will also be hosting an electronics recycling event on Saturday, May 22 from 8 a.m. to 2 p.m. at the Overland Park Convention Center, 6000 College Boulevard to allow city residents an opportunity to drop off their unwanted electronics for recycling or reuse. Volunteers are needed to make this collection possible. If you would be interested in helping with this event contact Jim Twigg at 913/895-6273 or e-mail jim.twigg@opkansas.org.

J

A

N

U

A

R

Y

H

I

-

L

I

T

E

S

JANUARY MEETING

Kansas City, Missouri



Phil Dula presented Timberlyn Smith with a plaque of appreciation for her service as last year's President.

We enjoyed a combined meeting with the local AIHA chapter.

Dave Huyett from Honeywell presented on Six Sigma and EMS issues.





SERVING YOU NATIONWIDE 24/7
Environmental Remediation/Emergency
Response/Waste Management/Tank & Railcar
Cleanings/O&M/Facility Closures/Product
Transfers/Excavation & Demolition/Heavy
Equipment Operators/Sampling
24/7 Corporate Customer Service Line
1-800-637-5471
KC Office Division Manger: Bill Conkling
Cell Phone (816) 305-4017



Visit our website!

Heartland Chapter ACHMM

www.kumc.edu/hcachmm

Advertise Here!!!!

ACHMM members and friends, here is a great opportunity to promote your company's services, and at the same time, help out the Heartland Chapter!

For just \$50/year, we will place your company ad in the newsletter. If interested, please contact any one of the chapter officers.