

# Faculty Research

School of Allied Health faculty are engaged in research addressing society's most pressing health issues.



## Catana E. Brown, PhD, OTR

**Partnerships in Health Promotion**

*Sponsor: Department of Health and Human Services*

**Matching Learning Potential and Rehabilitation Approach for People with Schizophrenia**

*Sponsor: National Alliance for Research on Schizophrenia*

**Dynamic Assessment of Cognition in Schizophrenia**

*Sponsor: National Institutes of Health*

**A Psychiatric Rehabilitation Approach to Weight Loss**

*Sponsor: National Institutes of Health*



## Lara Boyd, PhD

**Can Motor Learning Shift the Timing and Pattern of Brain Activity After Stroke**

*Sponsor: University of Kansas Medical Center Research Institute, Inc.*

**Compensatory Brain Activation After Stroke**

*Sponsor: National Institutes of Health*

**Recovery from Stroke: What is the Role of the Undamaged, Contralateral Cortex?**

*Sponsor: American Heart Association*



## Susan E. Carlson, PhD

**DHA Supplement and Pregnancy Outcomes**

*Sponsor: National Institutes of Health*

**Clinical Trials**

*Three Privately Sponsored*

**Research Grant**

*Privately Sponsored*



## Mark E. Chertoff, PhD

**Clinical Measures of Auditory Linear/Nonlinear Processes**

*Sponsor: University of Kansas Medical Center Research Institute, Inc.*

**Diagnosing Auditory Nerve Degeneration**

*Sponsor: Royal National Institute for Deaf People (UK)*



## Debora B. Daniels, PhD

**Language and Vocabulary Development:**

**Development of a Culturally-based Language & Vocabulary Intervention for Elementary School Children with Language Impairments & Children Who Are at High Risk for Developing Learning Disabilities**

*Sponsor: Department of Education (Co-Investigator)*



## Winifred Dunn, PhD, OTR, FAOTA

**Characterizing Individual Differences in Sensory Processing, Temperament and Brain Activity in Adolescents with and without Asperger Syndrome**

*Sponsor: Wallace Research Foundation*



**John A. Ferraro, PhD**

An Improved Method of Electrophysiological Assessment of Hearing Function in Newborns and Young Children

Sponsor: Deafness Research Foundation



**Marc E. Fey, PhD**

Effects of Fast ForWord on Language Processing

Sponsor: National Institutes of Health



**Mary Hise, PhD, RD, LD**

Immuno-modulatory Effects of Parenteral Nutrition After Intestinal Failure

Sponsor: National Institutes of Health



**Patricia Kluding, PhD, PT**

The Effects of Diabetes on the Benefits of Exercise After Stroke

Sponsor: National Institute of Disability and Rehabilitation Research (Fellowship)



**Karen Kuphal, PhD**

Effect of Exercise on Reducing Peripheral Neuropathic Pain in Female Rats

Sponsor: Building Interdisciplinary Research Careers in Women's Health K-12



**Wen Liu, PhD**

A Pilot Study of Electro-acupuncture and Strengthening Exercise for Spastic Wrist Joint in Post-stroke Patients

Sponsor: American Heart Association-Heartland Affiliate

Strength Training for Management of Idiopathic Scoliosis

Sponsor: KU Surgery Association

Sensory-enhanced Motor Training for Hemiparetic Arm/Hand

Sponsor: National Institutes of Health

Development of a Robot-aided Training with Sensory Enhancement to Restore Motor Function for Stroke Survivors

Sponsor: National Institutes of Health



**Patricia S. Pohl, PhD, PT**

Cost of Conversation After Stroke: Functional Deficits Revealed After Speaking

Sponsor: American Heart Association-Heartland Affiliate



**Jeffrey D. Radel, PhD**

Factors Contributing to Severity of Retinal Vascular Pathogenesis Studied in Animal Models

Sponsor: Kansas Lions Sight Foundation

Influence of Dietary Components on Oxygen-Induced Vascular Pathology in Newborn Rat Retina

Sponsor: University of Kansas Medical Center Research Institute, Inc. (Co-Investigator)



**Julie A. Roth, JD, MHSA, RHIA**

**HIPAA Transactions and Code Sets: Have the Standards Been Successful?  
A Hospital Financial Manager Perspective**

*Sponsor: American Health Information Management Association*



**Irina Smirnova, PhD**

**Can a Drug Replace Exercise to Improve the Diabetic Heart?**

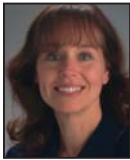
*Sponsor: American Heart Association*

**Proteomic Approach to Study Diabetic Heart Protein  
Posttranslational Modification**

*Sponsor: National Institutes of Health*

**ICAM-1 Targeted Nanoparticles for in Vivo,  
VEGF-Induced Angiogenesis**

*Sponsor: Juvenile Diabetes Research Foundation International (Co-Investigator)*



**Lisa A. Stehno-Bittel, PhD, PT**

**Templated Islets for Enhancing Insulin Production**

*Sponsor: Juvenile Diabetes Research Foundation International (Co-Investigator)*

**Portable and Wavelength-Tunable Two-Photon Microscopy**

*Sponsor: National Institutes of Health (Co-Investigator)*

**Dilation of Arteries and Veins in Rabbits in Vivo  
by Proteolysis of Intramural Elastin**

*Sponsor: Proteon Therapeutics, LLC*

**Impact of Exercise on Parkinson's Disease Therapy**

*Sponsor: National Institutes of Health; University of Houston (Co-Investigator)*



**Debra K. Sullivan, PhD, RD, LD**

**Dairy Foods and Blood Pressure in Multi-Ethnic Children**

*Sponsor: National Institutes of Health*

**Synergistic Effect of Dairy Foods on Metabolism:  
A Mechanistic Study**

*Sponsor: Dairy Management, Inc.*

**Supplement to Synergistic Effect of Dairy Foods on Metabolism:  
A Mechanistic Study**

*Sponsor: Dairy Management, Inc.*

*Co-Investigator:*

**Growth Hormone Use in Prader-Willi Syndrome and Obese Adults**

*Private Sponsor*

**Substrate Oxidation in Children in Response  
to Exercise with High and Low Intake**

*Sponsor: Dairy Management, Inc.*

**Resistance Training for the Prevention of Obesity**

*Sponsor: National Institutes of Health*

**Prevention of Obesity in Children with PAAC**

*Sponsor: National Institutes of Health*

**Kansas Get Moving!**

*Sponsor: Sunflower Foundation*

**Long-term Exercise, Weight Loss and Energy Balance**

*Sponsor: National Institutes of Health*

**A Psychiatric Rehabilitation Approach to Weight Loss**

*Sponsor: National Institutes of Health*

**Prevention of Obesity in YMCA After School Programs**

*Sponsor: National Institutes of Health*



**Hao Zhu, PhD**

**Role of Ncb5or in Insulin Production**

*Sponsor: National Institutes of Health; Brigham and Women's Hospital-  
Harvard Medical Center (Co-Investigator)*