



PROJECT ECHO

Extension for Community Healthcare Outcomes

Presents:

Airways ECHO

Calling all: Primary Care Clinicians and their team, School Nurses, Public Health Nurses, Social Workers, Community Health Workers, and Public Health Professionals

You and your colleagues are invited to join us in a four week ECHO focused on Lung Disease. We'll have a panel of experts each week joining your learning collaborative to offer the latest evidenced-based research and suggestions for best practices when these conditions present themselves to you.

Curriculum:

1. Vaping threatens our students
2. GOLD: Global Initiatives for Chronic Obstructive Lung Disease
3. Strategies to help manage Asthma and Allergies
4. Letting lungs evaluate the environment



Wednesday -- noon till 1:00 PM

- November 1
- November 8
- November 15
- November 29

No-cost CE/CME/CNE



Join us: E-Mail: projectecho@kumc.edu or Call: 913-588-2081

Thank You:
KUCTT, KU Asthma Center
HRSA support through:
Rural Child Poverty—
Telehealth Network Grant
Programs
Telehealth ROCKS
&
Telehealth ROCKS Schools



More Information? E-mail: projectecho@kumc.edu Call: 913-588-2081

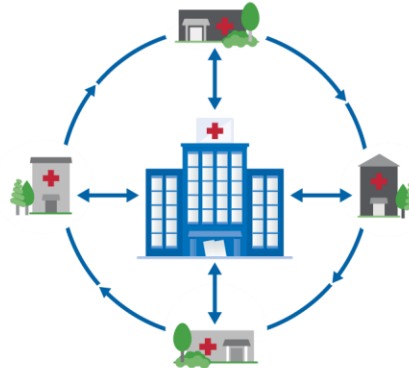


Making geography irrelevant

Extension for Community Healthcare Outcomes

Moving Knowledge, Not Patients

Through technology-enabled collaborative learning, ECHO creates access to high-quality specialty care in local communities.



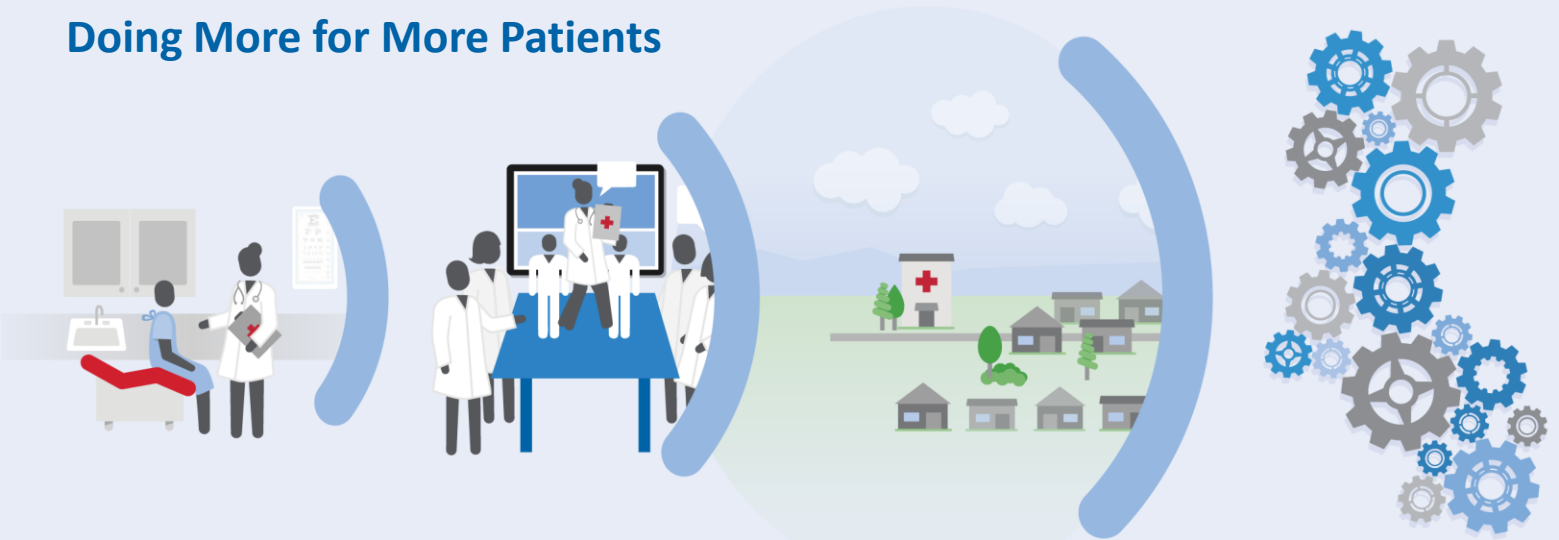
Hub and spoke knowledge-sharing networks create a learning loop:

Community providers learn from specialists.

Community providers learn from each other.

Specialists learn from community providers as best practices emerge.

Doing More for More Patients



PATIENTS

- Right Care
- Right Place
- Right Time

PROVIDERS

- Acquire New Knowledge
- Treat More Patients
- Build Community of Practice

COMMUNITY

- Reduce Disparities
- Retain Providers
- Keep Patients Local

SYSTEM

- Increase Access
- Improve Quality
- Reduce Cost

KUMC ECHO Series

Asthma

Back-to-School

Child Behavioral Health:

- ADHD
- Pediatric Psychopharmacology

Pain Management

Inside KUMC ECHO

1. Use technology to link inter-disciplinary community teams with specialists
2. Apply case-based learning
3. Share “best practices” evidence-based health care
4. Evaluate and monitor outcomes

Goal: Improved outcomes for Kansas patients

Are you a part of the ECHO?

Contact us

913-588-2081 | projectecho@kumc.edu