

PROJECT ECHO

Extension for Community Healthcare Outcomes



Asthma

- Are you and your practice interested in updates on the latest evidence based treatment for your patients with asthma?
- Would you like help with enhanced care coordination to improve outcomes for your patients with asthma?
- Do you enjoy professional interaction with colleagues from different areas of the state?

Why ECHO:

ECHO creates a virtual community of learners engaged in collaborative learning via secure, easy-to-use videoconferencing technology. Case-based, interactive training sessions help disseminate best practice guidelines while supporting implementation of standardized practice protocols for asthma in the primary care setting. These protocols help reduce variation in care and improve outcomes for patients experiencing asthma across the lifespan.

Four Session Series

1. One hour per week for four weeks (noon to 1:00 CST)
2. Series begins in February 2017
3. No-cost CME/CNE
4. Curriculum includes:
 - identifying the severity of symptoms using pulmonary function tests,
 - best medications for asthma control,
 - developing an Asthma Action Plan
 - new asthma treatments and therapies

ECHO Asthma Outcomes:

1. Reduce disparities and variations in patient treatments
2. Increased patient care coordination
3. Rapid learning and best-practice dissemination



Clinician/Staff Time Commitment

Total: 5 1/2 hours

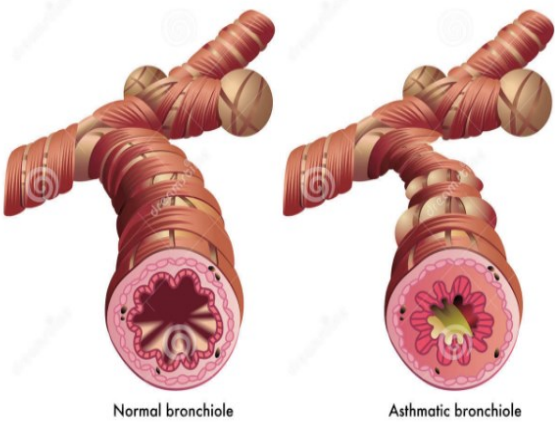
- 10 minutes to review cases prior to session
- 30 minutes case preparation for presentation
- 4 hours/1 hour per ECHO/4 sessions
- 20 minutes survey completion
- 30 minutes staff time – preparation

Sponsors: KUMC
KU Asthma Center

More Information? E-mail: projectecho@kumc.edu or Call: 913-588-2081

KUMC Asthma ECHO Team

ASTHMA



Matthew R Sharpe, MD
Associate Professor
KUMC Pulmonary & Critical Care
Co-founder & Director
KU Asthma Center



Dave Burnett, PhD, RRT, AE-C
Assistant Professor & Chair
KUMC Dept. Respiratory Care Education
Co-founder & Director
KU Asthma Center



Michael Lewis, M.D.
Assistant Professor
KUMC Pediatrics
KU Medical Director Inpatient Pediatrics



Selina Gierer, D.O.
KUMC Assistant Professor
Pediatric Allergy and Immunology



Michael Kennedy, MD, FAAFP
KUMC Associate Dean for
Rural Health Education
Professor, Family Medicine



Eve-Lynn Nelson, PhD
Professor Behavioral Pediatrics
Director, KU Center for Telemedicine &
Telehealth



University of Kansas Medical Center

Join us: E-mail: projectecho@kumc.edu
Call: 913-588-2081