

2011: The 10th State of the School of Medicine Address

Barbara Atkinson, MD

Executive Vice Chancellor, KU Medical Center

Executive Dean, KU School of Medicine

October 24, 2011

KU's mission

As our state's flagship university, KU's mission is to lift students and society by educating leaders, building healthy communities and making discoveries that will change the world.

KU School of Medicine in 2011

Teaching: Expanding our campuses

Research: Increasing our national reputation

Clinical Care: Enhancing the patient experience

Service: Strengthening our commitment to Kansas

Teaching: Expanding our campuses

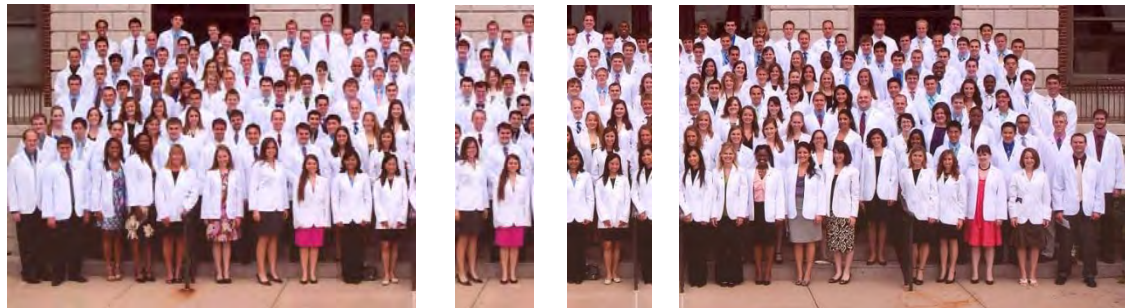
Before
2011: 175



2011: 191



2012: 211



KU School of Medicine–Salina



KU School of Medicine–Wichita

- ✓ 8 first-year students in 2011
- ✓ 28 first-year students in 2012
- ✓ New KU School of Pharmacy campus



New leaders in Wichita

Tracie Collins, MD, MPH
Chair, Preventive Medicine
and Public Health



Christopher McCracken, MHSA
Associate Dean, Administration



Brad Poss, MD, MMM
Associate Dean, Graduate Medical Education
Professor of Pediatrics



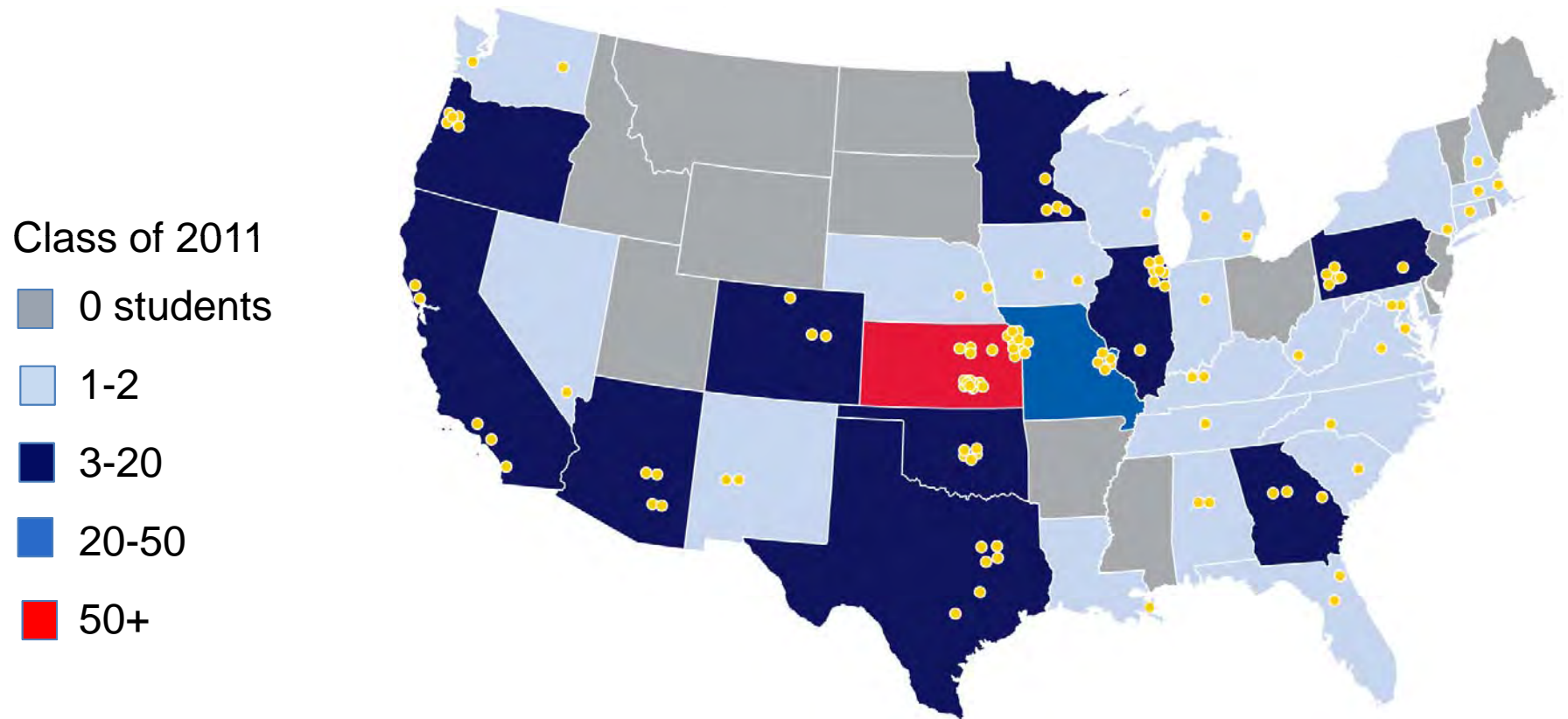
Accreditation for Graduate Medical Education (ACGME) 5-year review

5-year
reaccreditation
with no citations
(rare)

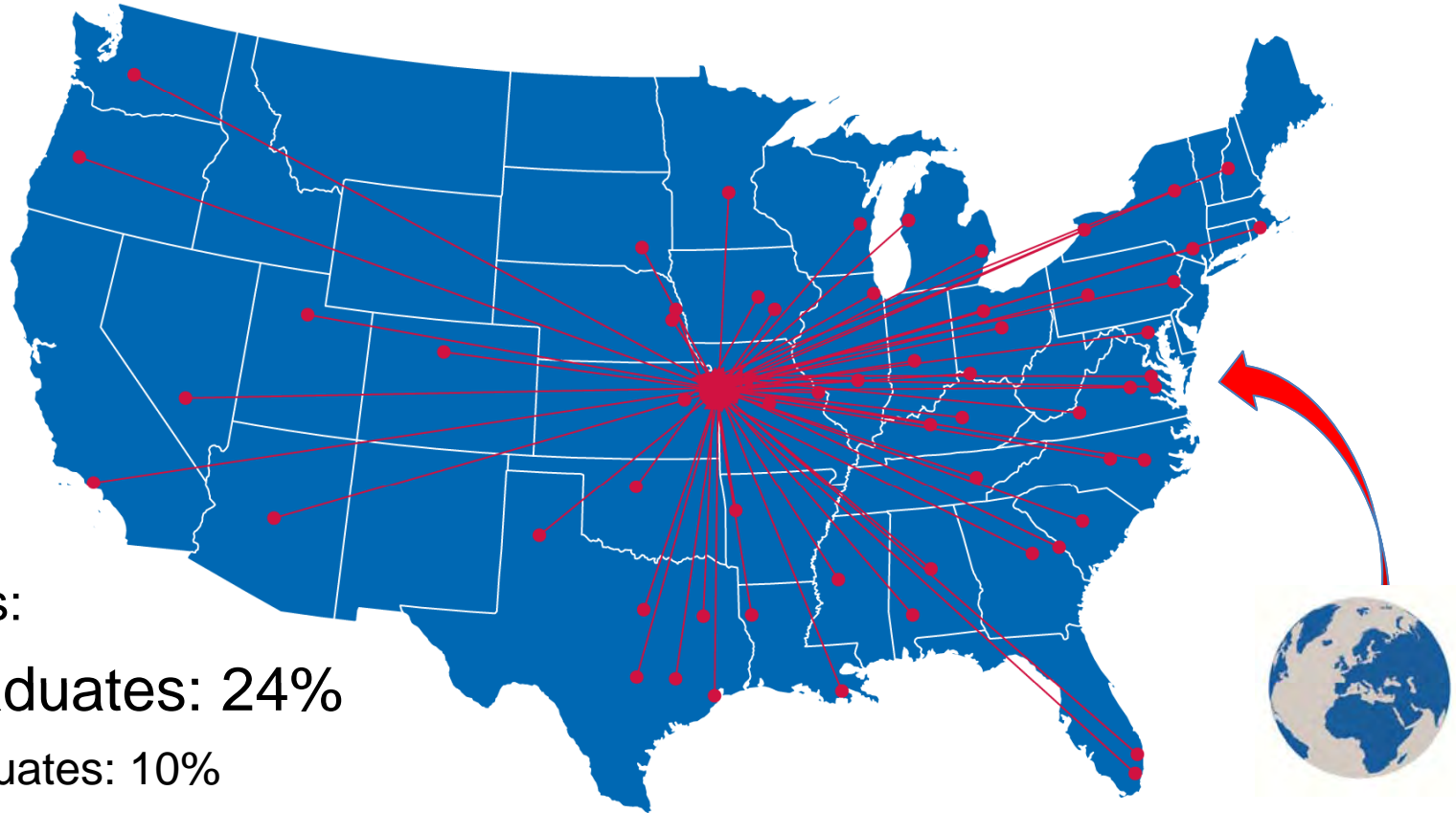


“The Review Committee commended the institution for its demonstrated substantial compliance with the ACGME’s Institutional Requirements without citations.” – July 15, 2011

Where KU School of Medicine MDs go for residency training



Residents and fellows in KC: Where they come from



2011 arrivals:

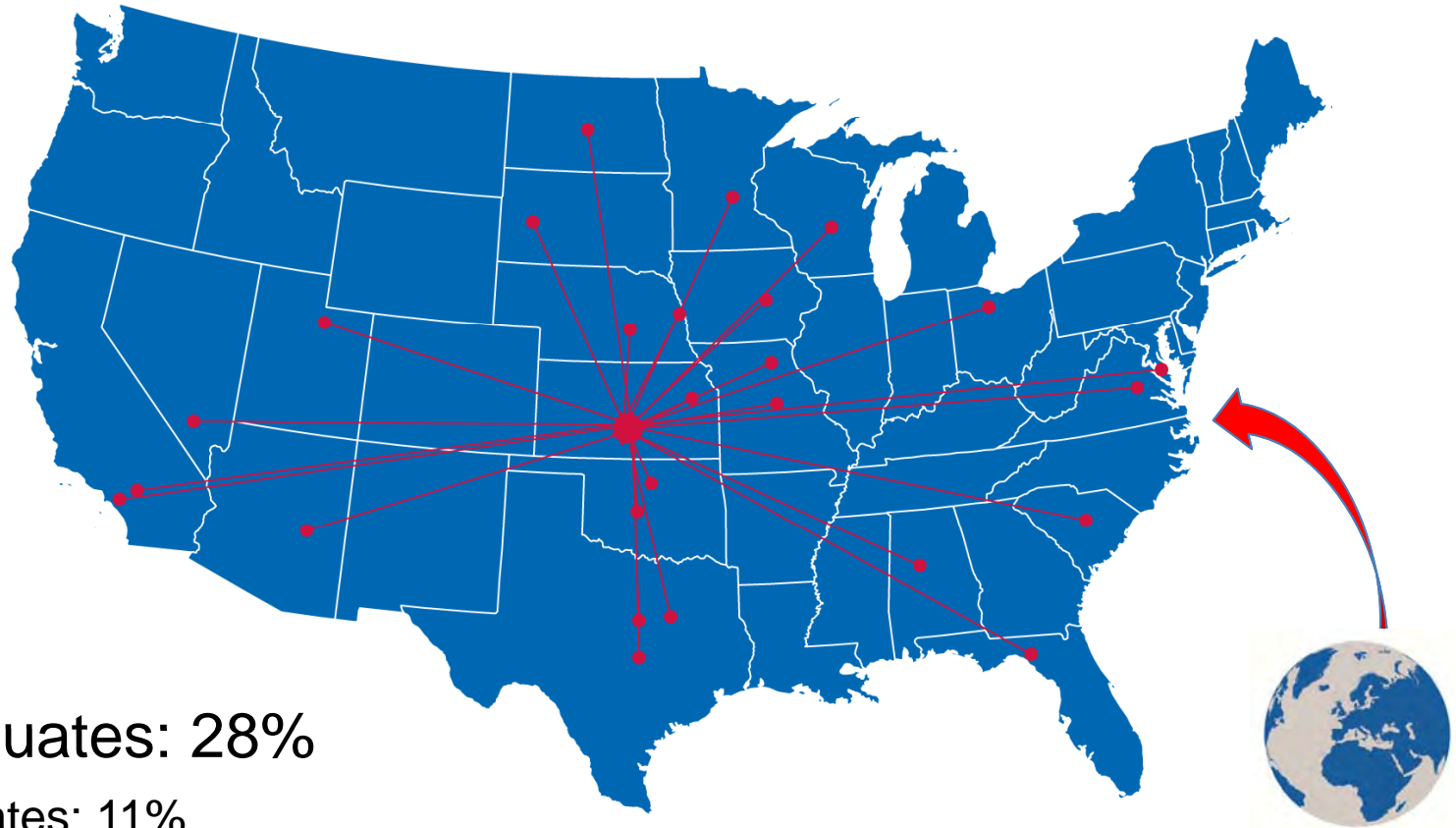
KUMC graduates: 24%

KCUMB graduates: 10%

50 other schools: 36%

Foreign medical graduates: 30%

Residents and fellows in Wichita: Where they come from



2011 arrivals:

KUMC graduates: 28%

KCUMB graduates: 11%

27 other schools: 34%

Foreign medical
graduates: 27%

KU School of Public Health

With \$9 million annually in NIH funding, KU's would be **18th out of 59** schools of public health.

Currently underway:

- Strategic planning
- Discussions with donors
- Plan for third PhD



Interprofessional education: A new emphasis

- Was identified by most strategic planning groups
- Initiatives already started:
 - ✓ Interprofessional simulations
 - ✓ Clinic with medical, nursing, pharmacy and law students
- We are developing an organizational structure



Research: Increasing our national reputation

<u>NIH Funding</u>	<u>All Schools</u>	<u>Public Schools</u>
2006 = \$36.6m	75 th	47 th
2008=\$44.7m	65 th	36 th
2009=\$46.6m	65 th	35 th
2010=\$50.5m	60th	32nd

Goal: 25th among public schools by 2015

NIH Rankings: Public Medical Schools

10 departments in Top 25 NIH funding for 77 public medical schools – 5 clinical and 5 basic science:

- 5th Anatomy and Cell Biology
- 7th Preventive Medicine and Public Health
- 8th Family Medicine
- 11th Pharmacology, Toxicology and Therapeutics
- 15th Molecular & Integrative Physiology
- 18th Orthopedics
- 20th Otolaryngology
- 23rd Microbiology, Immunology & Molecular Genetics
- 25th Pathology & Laboratory Medicine
- 25th Neurology

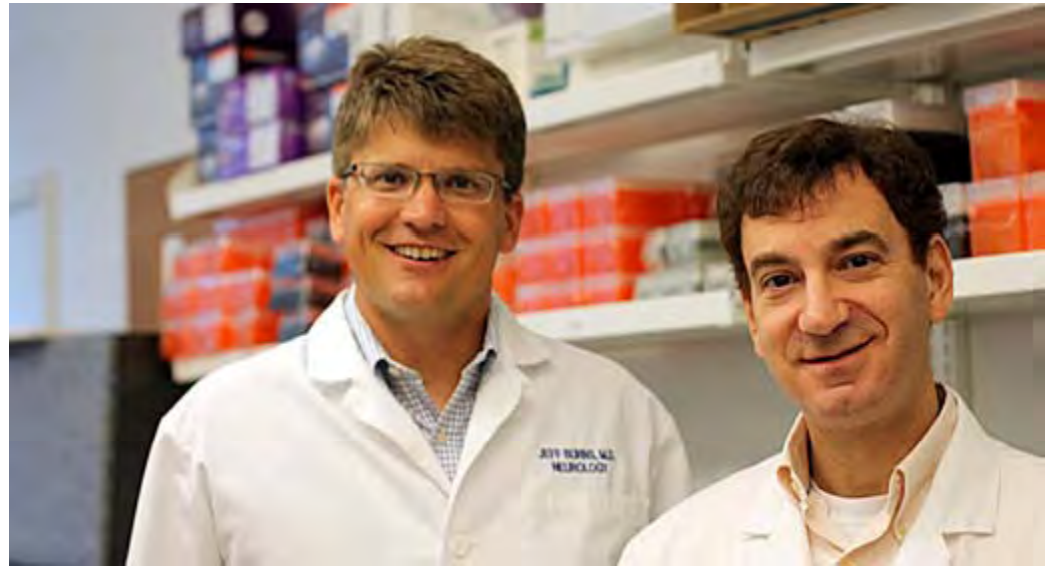
Frontiers: Clinical and Translational Science Award (CTSA)

- ✓ \$20 million, 5-year award
- ✓ Only 60 institutions
- ✓ 13 regional academic and health system partners
- ✓ 15 community partners
- ✓ Chamber of Commerce “Big 5”



Alzheimer's Disease Center designation

- ✓ 5-year, \$6 million NIH grant
- ✓ Only 29 institutions
- ✓ We are pioneers in linking Alzheimer's and brain energy metabolism



Excellence in neurological research

\$4 million anonymous gift
to the Spinal Cord Injuries
Repair Program



NeuroNEXT — KUMC one of first 25 sites in
the NIH's new Network for Excellence in
Neuroscience Clinical Trials

KU Clinical Research Center

First patient:
January 23, 2012



Cancer: NCI application submitted

- ✓ Application submitted
September 22, 2011
- ✓ KU Endowment reaches
\$61 million milestone
- NCI reviewers site visit:
February 22, 2012
- We expect to hear by
early summer 2012



youtube.com/user/KUMedCenter

KU Cancer Center merges with Kansas City Cancer Center

Now KU Faculty:
21 oncologists
7 radiation oncologists

6,916 new cancer
patients in 2010



Cancer research: New in 2011

- ✓ Danny Welch, PhD
Associate Director of Basic Science
Chair, Department of Cancer Biology

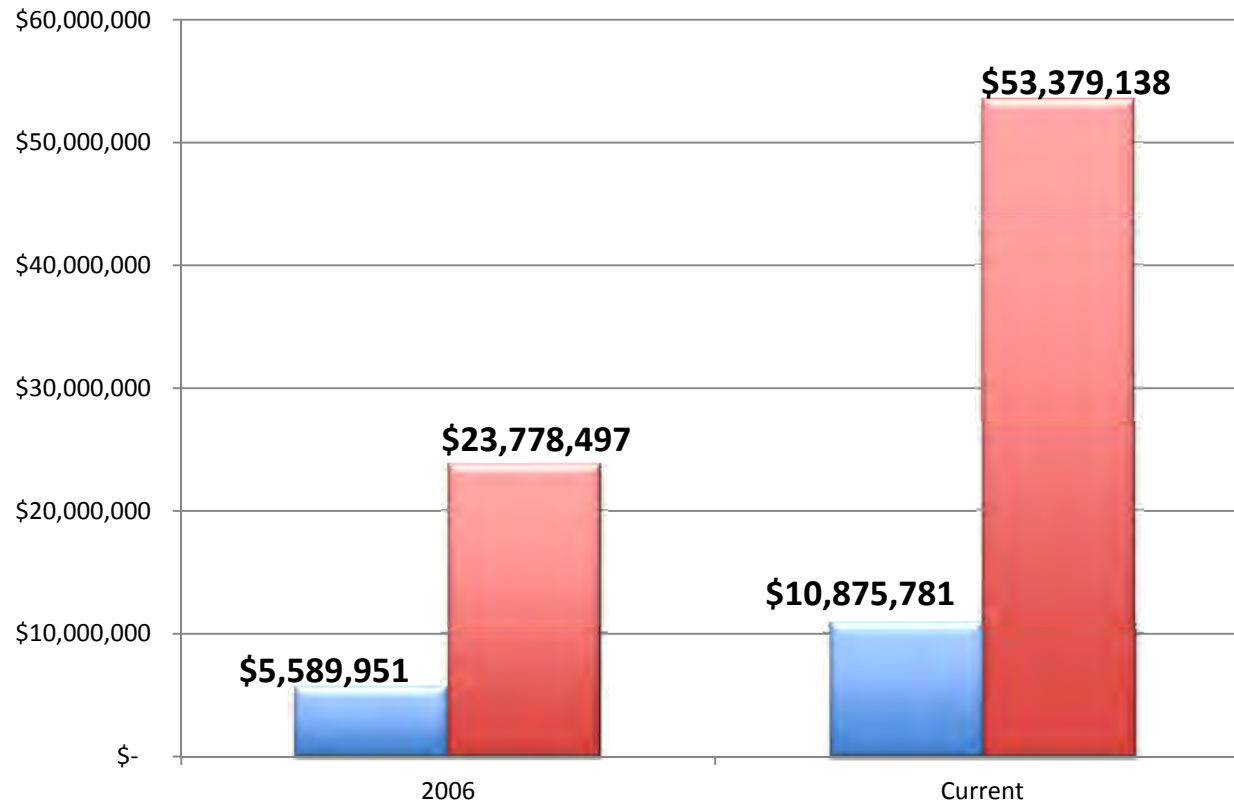


- ✓ Raymond Perez, MD
Medical Director, KU Clinical Research Center



- ✓ Seven drugs in clinical trials: All developed at KU
- ✓ Therapeutic Clinical Trial accrual grown from less than 4% to greater than 12% of patients on trials
- ✓ CRADA and The Learning Collaborative:
Collaborative Research and Development Agreement between KUMC, Leukemia & Lymphoma Society, NIH to speed drugs for rare blood cancers

Cancer research: Growth in NCI funding



Blue is NCI funding, red is all cancer funding

Clinical Care: Enhancing the patient experience

Medical Office Building
opened July 2011

Orthopedics Building
opened October 2011

Electronic Health Records

- Phase I of rollout in outpatient setting
- Two more phases to go



New Clinical Faculty Leaders



Paul Camarata, MD, FACS
Chair of Neurosurgery



Alan Yu, MD
Director, Division of Nephrology
Director, Kidney Institute



Raj Mitra, MD, Chair of Physical
and Rehabilitative Medicine

New Clinical Faculty Leaders



Mehrdad Maz, MD
Director, Division of Allergy, Clinical
Immunology, and Rheumatology



Peter J. Van Veldhuizen, MD
Director, Division of Hematology/Oncology



Timothy M. Schmitt, MD, FACS
Director, Organ Transplantation

KU School of Medicine joins Marillac for Center of Excellence

Child psychiatry patients treated in Marillac's 32-bed, state-of-the-art facility

Setting will enhance our child psychiatry education program



Service: Strengthening our commitment to Kansas

Institute for Outreach & Community Engagement

- ✓ Centralizes KUMC's outreach and community engagement activities
- ✓ Connects schools, departments, researchers and communities to improve health
- ✓ Provides resources, including:
 - Help establishing community relationships
 - Communications assistance
 - Recognition awards
 - Small travel and bridging grants
 - Training for community-based research



KUMC in every Kansas County

KU MEDICAL CENTER
The University of Kansas

Search KUMC web site keyword/name
myKUMC Email ANGEL Directory Library A-Z

Institute for Outreach & Community Engagement

KUMC Home > Outreach > Serving Communities > Southwest > Morton

Morton County

Serving Kansas

- 6 alumni in Morton County

Enhancing Student Education

- 3 medical students received hands-on training in Elkhart through the Rural Preceptorship Program.

Strengthening the Health Care Workforce

- 1 professional education/administration visit via telemedicine

Advancing Health Care Access

- 4 visits with Morton Countians by KU Medical Center physicians in outreach clinics

Are we forgetting anything?
Please fill out the form below with any information that we are missing for this county.

Contact Information:

Name *

Occupation

Email *

KU MEDICAL CENTER
The University of Kansas

Search KUMC web site keyword/name
myKUMC Email ANGEL Directory Library A-Z

Institute for Outreach & Community Engagement

KUMC Home > Outreach

OUR INITIATIVES

- Enhancing Student Education
- Strengthening the Health Care Workforce
- Researching to Improve Health
- Advancing Health Care Access
- Serving Communities

Outreach Connections

Payton Kessler RN was able to stock her classroom with recycled medical equipment from KUMC

KU Partners

- Area Health Education Centers
- Family Medicine- Research Division
- Outreach Aircraft
- Preventive Medicine & Public Health- Kansas City
- Preventive Medicine & Public Health- Wichita
- Rural Medical Education
- Telemedicine & Telehealth
- Rural Health Education and Services

About Us

In 1905, the University of Kansas Medical Center was established on the most eastern edge of Kansas facing West to remind us why we go to work: *We work for Kansas.*

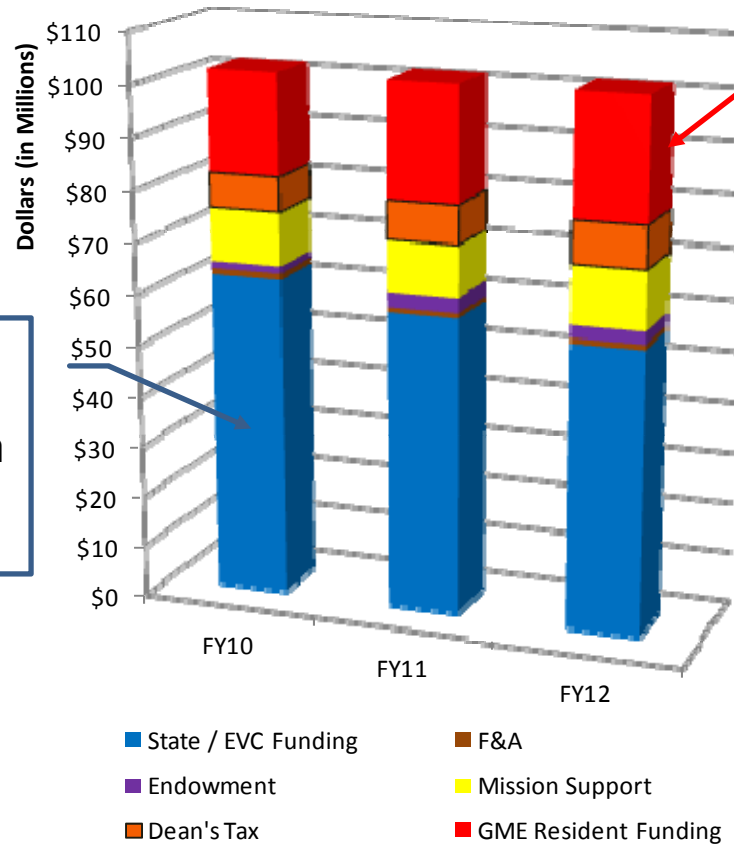
That's why we work with communities in every county to enrich the health of Kansans, whether they live in one of the state's largest metropolitan areas or in the smallest town. Select an initiative in the map below to see our work across the state or click on a county for detailed information.

Advancing Health Care Access
 Strengthening the Health Care Workforce
 Enhancing Student Education
 Serving Communities
 Researching to Improve Health
 View All

Together, our work at the University of Kansas Medical Center, along with our partners The University of Kansas Hospital and University of Kansas Physicians, contributes more than

Revenue Sources

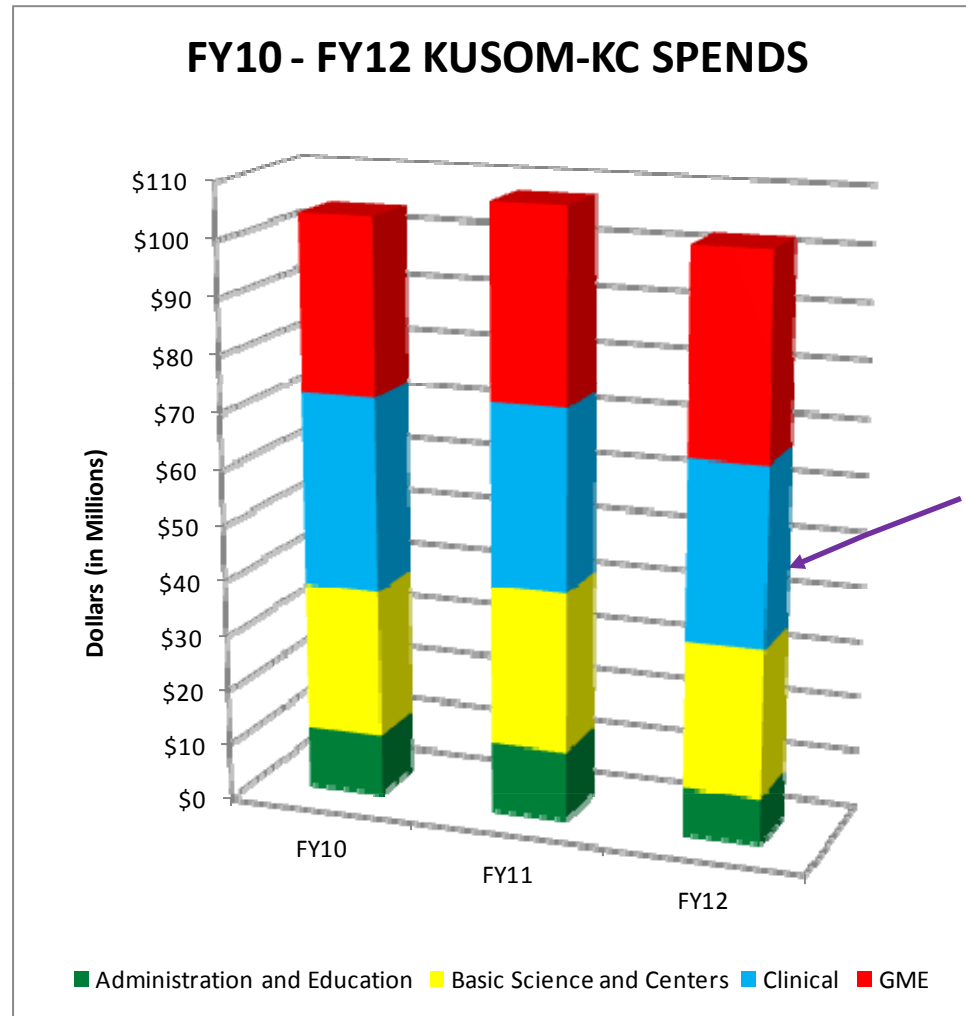
FY10 - FY12 KUSOM-KC SOURCES



State funds for the School dropped \$7M from \$62M in FY10 to \$55M in FY12

Affiliate contracts for GME increased by more than \$2M between FY10 and FY12

Spending



Total investment in Clinical Departments is just slightly more than that in the Basic Science Departments and Centers.

In both cases, the biggest new investment is in research start-up packages.

Improvements to KUMC.edu

Before

100,000 pages overall

Since March 1, 2011:

- ✓ 3,000 pages in new format
- ✓ 8,000 eliminated from “information landfill”

Rolling out:

- Better search engine
- Mobile version
- Better calendar



After



KUMC research: Meet Our Experts

The screenshot shows the 'Meet Our Experts' page on the KUMC website. The page features a navigation menu with 'Works', 'Groups', 'People', 'Publications', and 'Publishers'. Below the menu is a search bar for experts and a 'Search Experts' button. The main content area is divided into two sections: 'People' and 'Works - Recent additions'. The 'People' section displays a grid of 15 expert profiles, each with a photo and name: Festoff, Carlson, Lindsley, Vacek, Ladokhin, Albertini, Thomas, Meyers, Zhu, Rozman, Wan, Durham, Gonzalez, Lutkenhaus, and Banerjee. The 'Works' section lists three recent publications with titles, journal names, and authors.

People

Festoff, Carlson, Lindsley, Vacek, Ladokhin, Albertini, Thomas, Meyers, Zhu, Rozman, Wan, Durham, Gonzalez, Lutkenhaus, Banerjee

Works - Recent additions

The sigma1 receptor interacts with N alkyl amines and endogenous sphingolipids
Journal article
Ramachandran Subramaniam, Chu Uyen B, Mavlyutov Timur A, Pal, Arindam, Pyne Susan, more...
European Journal of Pharmacology (2009)
Find It@KUMC | Save

Probing the steroid binding domain like I SBDLI of the sigma 1 receptor binding site using N substituted photoaffinity labels
Journal article
Fontanilla Dominique, Hajjipour Abdol R, Pal, Arindam, Chu Uyen B, Arbabian Marty, more...
Biochemistry (2008)
Find It@KUMC | Save

Juxtaposition of the steroid binding domain like I and II regions constitutes a ligand binding site in the sigma 1 receptor
Journal article
Pal, Arindam, Chu Uyen B, Ramachandran Subramaniam, Grawoig David, Guo Lian Wang, more...
The Journal of biological chemistry (2008)
Find It@KUMC | Save

Experts.kumc.edu

1,107 profiles

15,734 publications

847 publications added in 2010

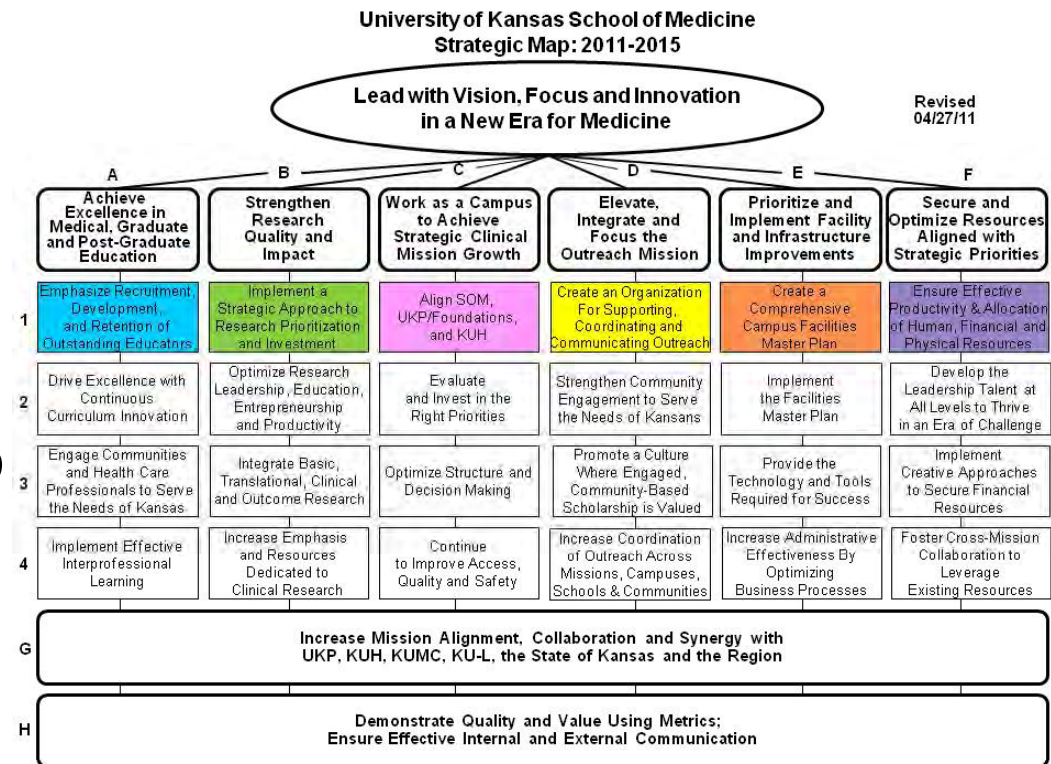
429 publications added in 2011

1,911 visits per month

13,377 pages viewed (7 pages average viewed on each visit)

Strategic Planning

- ✓ Now working on implementation
- ✓ Retreat in December to review six months' progress



Changing for Excellence

Emphasis is on efficiency – not just cutting costs

Work groups are leading the project

Phase I interviews/focus groups: 115

Email box: 24

Phase II interviews: 40

Work group participants: 53

Work group meetings: 47 in Phase II

Survey responses:

- 266 administrative
- 238 research

Advisory group:

- Phase I – 16 members/5 meetings
- Phase II – 17 members/4 meetings



Changing for Excellence

Approach – energy conservation

A management program for these energy conservation recommendations will help support the implementation of this initiative.

Mobilize	Design	Deploy	Optimize
December 2011 – February 2012	December 2011 – May 2012	December 2012 – June 2013	Ongoing
<p>Tasks</p> <ul style="list-style-type: none"> • Create/establish committee to focus on energy conservation initiatives • Develop committee charter (e.g., mission, goals, objectives) 	<p>Tasks</p> <ul style="list-style-type: none"> • Revise KUMC Energy Policy • Determine communication methods for policy and other conservation efforts • Develop request for proposal for sub-metering project 	<p>Tasks</p> <ul style="list-style-type: none"> • Develop implementation schedule and report importance of measurement to KUMC community • Monitor building consumption over specified period and establish base line metrics and benchmarks 	<p>Tasks</p> <ul style="list-style-type: none"> • Develop and report on identified metrics for measuring performance
<p>Deliverables</p> <ul style="list-style-type: none"> • Develop energy conservation plan/strategy and present to leadership 	<p>Deliverables</p> <ul style="list-style-type: none"> • Create quantifiable goals and objectives that address current energy commitments and have defined performance metrics 	<p>Deliverables</p> <ul style="list-style-type: none"> • Create a campus-wide inventory of projects, prioritization model, and investment strategy 	<p>Deliverables</p> <ul style="list-style-type: none"> • Create annual report that demonstrates results of energy projects, behavioral changes, consumption levels and policy updates

1

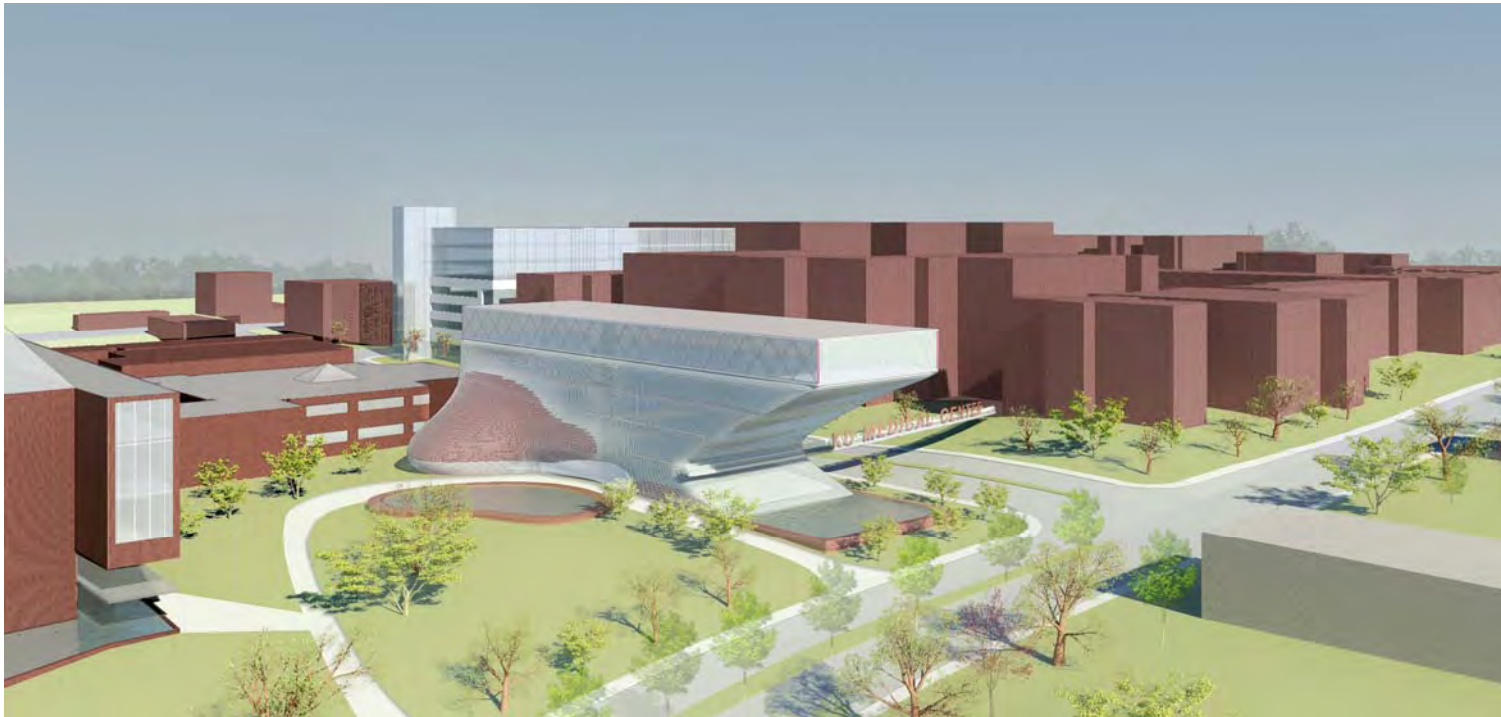
Enhanced access to information via Enterprise Analytics

Starting November 1: Comprehensive online reporting system

- General reports include:
 - Summaries of PeopleSoft budgets and expenditures of major units
 - All sponsored research awards
- Reports for the user's unit:
 - Detailed budgets and expenditures
 - Cash flow
 - Executive Dean's commitments
 - Grant proposals
- Initially for unit heads and administrative officers
- Developing dashboards for chairs, center directors, etc.
- Progressively expanding to include student, HR data, etc.
- Invitations to participate being sent to unit heads this week



Master Facility Planning



Cannon Design is looking at space needs all across campus – including a new medical education building

2011

Another Exciting Year