

## REGISTRATION AND FEES

Payment is required at the time of registration. Please register in advance. Fees include course materials, breakfast, lunch, refreshments and continuing education credit.

- Physician \_\_\_\_\_ **\$100**  
 Non-physician healthcare professional \_\_\_\_\_ **\$50**  
 Residents, fellows, students \_\_\_\_\_ **\$25**

There will be no refunds for this course.

## REGISTER ONLINE

[kumc.cloud-cme.com](http://kumc.cloud-cme.com)

### OR

Complete this form and mail with payment.

#### Payable:

University of Kansas Medical Center

#### Mail to:

Marla Sutton, MS  
University of Kansas Medical Center  
Office of Continuing Education  
and Professional Development  
3901 Rainbow Blvd., MS 4001  
Kansas City, KS 66160

#### For questions about the course

Phone: 913-588-4487

Fax: 913-588-4486

Email: [msutton@kumc.edu](mailto:msutton@kumc.edu)

Title \_\_\_\_\_ ( Mr., Mrs., Ms., Dr.)

Email \_\_\_\_\_

Name \_\_\_\_\_

Specialty \_\_\_\_\_

Degree \_\_\_\_\_

# Neuromuscular patients followed \_\_\_\_\_

Address \_\_\_\_\_

City \_\_\_\_\_

State & Zip \_\_\_\_\_

Daytime phone \_\_\_\_\_

#### Special Accommodation

If you will need special accommodation, please mark the box above, and a representative of the course will contact you.

## CANCELLATION POLICY

KU Continuing Education reserves the right to cancel the Neuromuscular Review Course and return all fees in the event of insufficient registration. The liability of the University of Kansas is limited to the registration fee. The University of Kansas will not be responsible for any losses incurred by registrants, including but not limited to airline.

## TAMPA AIRPORT MARRIOTT

Tampa Airport Marriott offers the ultimate in comfort and convenience in the heart of Tampa International Airport. In addition to easy access to the terminals, the hotel is just a short drive from International Plaza and Bay Street shopping center, plus a variety of beautiful



beaches and golf courses. Relax in guest rooms featuring contemporary decor, soundproof windows and luxurious bedding. Grab a bite to eat at one of the on-site restaurants, then maintain your workout routine in the modern fitness center and sparkling outdoor swimming pool.

## NEUROMUSCULAR REVIEW COURSE 2017

Endorsed by:



The University of Kansas Medical Center  
Department of Neurology  
3901 Rainbow Boulevard, Mailstop 4001  
Kansas City, KS 66160

# NEUROMUSCULAR REVIEW COURSE 2017

Sponsored by the University of Kansas Medical Center Departments of Neurology and Continuing Education and Professional Development

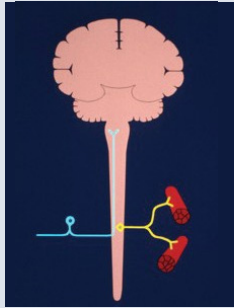
## MARCH 18, 2017

Tampa Airport Marriott  
4200 George J. Bean Parkway  
Tampa, Florida 33607  
Phone: 813-879-5151



**KU** MEDICAL CENTER  
The University of Kansas

## OVERVIEW



The Neuromuscular Review Course is presented by leading neurologists specializing in neuromuscular disorders and provides an up-to-date review of clinical issues related to the diagnosis and treatment of neuromuscular diseases.

## TARGET AUDIENCE

This program is designed for neurologists and other physicians treating neuromuscular disorders.

## LEARNING OBJECTIVES

After this program, participants should be able to:

1. Recognize the patterns of clinical presentation for muscle and nerve disease and determine the most appropriate laboratory tests and treatments based on the clinical pattern.
2. Identify the clinical phenotypes of peripheral neuropathies and how these phenotypes can dictate the appropriate laboratory evaluation as to the etiology of the peripheral neuropathy.
3. Review the electrodiagnosis of common and uncommon entrapment neuropathies and radiculopathies and discuss their management.
4. Recognize the diverse presentations of immune neuropathy and distinguish them from a number of untreatable neuropathies. Discuss the concept of diagnostic certainty in immune neuropathies and current treatment strategies for classic CIDP, Lewis Sumner syndrome, multifocal motor neuropathy and distal acquired demyelinating neuropathy.
5. Discuss the symptoms of neuropathic pain, management guidelines and its practical management.

6. Review the different clinical presentations of motor neuron disease. Discuss recent updates in clinical practice including recent quality measures. Understand the results of recent clinical trials and the direction of ongoing studies.
7. Summarize the evaluation and treatment of acquired muscle disorders and review auto antibodies.
8. Review the approach to the evaluation and treatment of inherited muscle disorders.
9. Identify new tests for diagnosing myasthenia gravis (MG) in patients who are acetylcholine receptor antibody negative. Learn new classification grading and monitoring systems for MG research studies. Discuss the use of thymectomy for the treatment of MG, new drugs for treating MG, and ongoing clinical research.

## FACULTY

**Richard J. Barohn, M.D.**, Gertrude & Dewey Ziegler Professor and Chairman of Neurology, University Distinguished Professor and Vice Chancellor for Research, University of Kansas Medical Center, Kansas City, Kansas

**Mazen M. Dimachkie, M.D.**, Professor of Neurology and Vice Chairman for Research; Director, Neuromuscular Division, University of Kansas Medical Center, Kansas City, Kansas

**Jonathan S. Katz, M.D.**, Director, Neuromuscular Disease Clinics, Forbes Norris ALS/MDA Center, California Pacific Medical Center, San Francisco, California; Adjunct Professor of Neurology, University of Kansas Medical Center, Kansas City, Kansas

**Todd D. Levine, M.D.**, Co-Director of ALS Center, Phoenix Neurological Associates; Clinical Assistant Professor of Neurology, University of Arizona, Phoenix, Arizona; Adjunct Professor of Neurology, University of Kansas Medical Center, Kansas City, Kansas

## AGENDA

8:00 - 8:25 a.m.

Registration and continental breakfast

8:25 - 8:30 a.m.

Introduction

8:30 - 9:15 a.m.

Clinical approach to neuromuscular disorders

9:15 - 9:55 a.m.

Laboratory testing in neuromuscular disorders

9:55 - 10:35 a.m.

Challenges in entrapments & axonal vs. demyelinating neuropathies

10:35 - 10:50 a.m.

Break

10:50 - 11:30 a.m.

Diagnosis & management of immune mediated polyneuropathies

11:30 a.m. - 12:10 p.m.

Clinical approach to painful neuropathy

12:10 - 1:00 p.m.

Lunch

1:00 - 1:25 p.m.

Motor neuron disease

1:25 - 2:15 p.m.

Approach to diagnosis and treatment of muscle disease

2:15 - 2:55 p.m.

Immunosuppressive therapies

2:55 - 3:25 p.m.

Neuromuscular junction disorders

3:25 - 3:45 p.m.

Case vignettes/questions & answers

3:45 - 3:50 p.m.

Closing remarks

## PLANNING COMMITTEE

**Mazen M. Dimachkie, M.D.**, Professor of Neurology and Vice Chairman for Research; Director, Neuromuscular Division, University of Kansas Medical Center, Kansas City, Kansas

**Richard J. Barohn, M.D.**, Gertrude & Dewey Ziegler Professor and Chairman of Neurology, University Distinguished Professor and Vice Chancellor for Research, University of Kansas Medical Center, Kansas City, Kansas

**Sonya Fabricius**, Executive Assistant to the Chairman, Department of Neurology, University of Kansas Medical Center, Kansas City, Kansas

**Kelly Lyons, Ph.D.**, Parkinson's Disease and Movement Disorder Center Research Professor and Research and Education Director, Department of Neurology, University of Kansas Medical Center, Kansas City, Kansas

**Marla Sutton, MS**, Senior Program Manager, Office of Continuing Education and Professional Development, University of Kansas Medical Center, Kansas City, Kansas

## ACCREDITATION

All participants are required to sign attendance rosters at the beginning of the program. A certificate of completion will be provided to all activity participants based on documentation of actual attendance time and payment in full. If you are not paid in full your certificate will be mailed to you upon receipt of payment.

**Physicians:** The University of Kansas Medical Center Office of Continuing Education and Professional Development is accredited by the Accreditation Council for Continuing Medical Education to provide continuing medical education for physicians.

The KU Medical Center Office of Continuing Education and Professional Development designates this live activity for a maximum of 6 AMA PRA Category 1 Credits™. Physicians should claim only the credit commensurate with the extent of their participation in the activity.