

REGISTRATION AND FEES - PITTSBURGH

Payment is required at the time of registration. Please register in advance. Fees include course materials, breakfast, lunch, refreshments, and continuing education credit.

- Physician _____ \$100
 Non-Physician Healthcare Professional _____ \$50
 Residents _____ \$25

PAYMENT BY CHECK OR CASH ONLY PLEASE MAKE CHECK PAYABLE TO: KU NEUROLOGY

Credit card payments are not accepted

There will be no refunds for this course.

Complete this form and mail with payment to:

KU Neurology
3599 Rainbow Blvd, MS 2012
Kansas City, KS 66160
ATTN: Kelly Lyons, PhD

Call 913-588-7159
Fax 913-588-6920
Email Kelly.Lyons@att.net

Title _____ (Mr., Mrs., Ms., Dr.)
Email _____
Name _____
Specialty _____
Degree _____ # Neuromuscular patients followed _____
Address _____
City, State, Zip _____
Daytime phone _____

Special Accommodation
If you will need special accommodation, please mark the box above, and a representative of the course will contact you.

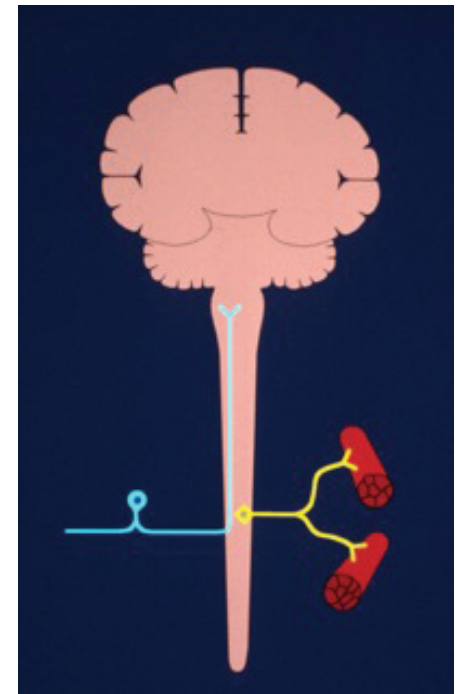
CANCELLATION POLICY

KU Continuing Education reserves the right to cancel the Neuromuscular Review Course and return all fees in the event of insufficient registration. The liability of the University of Kansas is limited to the registration fee. The University of Kansas will not be responsible for any losses incurred by registrants, including but not limited to airline cancellation charges or hotel deposits.

Kansas University Neurological Foundation
3599 Rainbow Blvd., Mailstop 2012
Kansas City, KS 66160

NEUROMUSCULAR REVIEW COURSE 2015

*Sponsored by the
University of Kansas Medical Center
Departments of Neurology and
Continuing Education and
Professional Development*



Saturday, October 17, 2015

Renaissance Pittsburgh Hotel
107 6th Street
Pittsburgh, PA 15222
412-562-1200

www.kumc.edu/neurology

OVERVIEW

The Neuromuscular Review Course is presented by leading neurologists specializing in neuromuscular disorders and provides an up to date review of clinical issues related to the diagnosis and treatment of neuromuscular diseases.

TARGET AUDIENCE

This program is designed for neurologists and other physicians treating neuromuscular disorders.

LEARNING OBJECTIVES

After this program, participants should be able to:

- 1) Recognize the patterns of clinical presentation for muscle and nerve disease and determine the most appropriate laboratory tests and treatments based on the clinical pattern.
- 2) Identify the clinical phenotypes of peripheral neuropathies and how these phenotypes can dictate the appropriate laboratory evaluation as to the etiology of the peripheral neuropathy.
- 3) Review the electrodiagnosis of common and uncommon entrapment neuropathies and radiculopathies and discuss their management.
- 4) Recognize the diverse presentations of immune neuropathy and distinguish them from a number of untreatable neuropathies. Discuss the concept of diagnostic certainty in immune neuropathies and current treatment strategies for classic CIDP, Lewis Sumner syndrome, multifocal motor neuropathy and distal acquired demyelinating neuropathy.
- 5) Discuss the symptoms of neuropathic pain, management guidelines and its practical management.
- 6) Review the different clinical presentations of motor neuron disease. Discuss recent updates in clinical practice including recent quality measures Understand results of recent clinical trials and direction of ongoing studies.
- 7) Summarize the evaluation and treatment of acquired muscle disorders and review auto antibodies.
- 8) Review the approach to the evaluation and treatment of inherited muscle disorders.
- 9) Identify new tests for diagnosing myasthenia gravis (MG) in patients who are acetylcholine receptor antibody negative. Learn new classification grading and monitoring systems for MG research studies. Discuss the use of thymectomy for the treatment of MG, new drugs for treating MG, and ongoing clinical research.

AGENDA

8:00 – 8:25
Registration and Continental Breakfast
8:25 – 8:30
Introduction
8:30 – 9:15
Clinical Approach to Neuromuscular Disorders
9:15 – 9:55
Laboratory Testing in Neuromuscular Disorders
9:55 – 10:35
Challenges in Entrapment Neuropathies
10:35 – 10:50 - Break
10:50 – 11:30
Diagnosis & Management of Immune Mediated Polyneuropathies
11:30 – 12:10
Clinical Approach to Painful Neuropathy
12:10 – 1:00 - Lunch
1:00 – 1:30
Motor Neuron Disease
1:30 – 2:00
Acquired Muscle Disorders
2:00 – 2:30
Genetic Muscle Disorders
2:30 – 3:00
Neuromuscular Junction Disorders
3:00 – 3:45
Case Vignettes/Questions & Answers
3:45 – 3:50 - Closing Remarks

COURSE SPONSORS

PLATINUM

NuFactor

SILVER

Baxter
Mallinckrodt
Octapharma

GOLD

CSL Behring
Genzyme/Sanofi
Grifols

BRONZE

Catalyst

FACULTY

Richard J. Barohn, MD

Gertrude & Dewey Ziegler Professor and
Chairman of Neurology, University Distinguished
Professor & Vice Chancellor for Research
University of Kansas Medical Center
Kansas City, Kansas

Mazen M. Dimachkie, MD

Professor of Neurology
Director, Neurophysiology Division
Director, Neuromuscular Section
University of Kansas Medical Center
Kansas City, Kansas

Jonathan S. Katz, MD

Director, Neuromuscular Disease Clinics
Forbes Norris ALS/MDA Center
California Pacific Medical Center
San Francisco, California
Adjunct Professor of Neurology
University of Kansas Medical Center

Todd D. Levine, MD

Co-Director of ALS Center
Phoenix Neurological Associates
Clinical Assistant Professor of Neurology
University of Arizona, Phoenix, Arizona
Adjunct Professor of Neurology
University of Kansas Medical Center

ACCREDITATION

All participants are required to sign attendance rosters at the beginning of the program. A certificate of completion will be provided to all activity participants based on documentation of actual attendance time, and payment in full. If you are not paid in full your certificate will be mailed to you upon receipt of payment.

Physicians: The University of Kansas Medical Center Office of Continuing Medical Education is accredited by the Accreditation Council for Continuing Medical Education to provide continuing medical education for physicians.

The KU Medical Center Office of Continuing Medical Education designates this live activity for a maximum of 6 *AMA PRA Category 1 Credits*[™]. Physicians should claim only the credit commensurate with the extent of their participation in the activity.

Endorsed by:

