

## REGISTRATION AND FEES - HOUSTON

Payment is required at the time of registration. Please register in advance. Fees include course materials, breakfast, lunch, refreshments, and continuing education credit.

- Physician \_\_\_\_\_ \$100  
 Non-Physician Healthcare Professional \_\_\_\_\_ \$50  
 Residents \_\_\_\_\_ \$25

### **PAYMENT BY CHECK OR CASH ONLY PLEASE MAKE CHECK PAYABLE TO: KU NEUROLOGY**

Credit card payments are not accepted

There will be no refunds for this course.

### **Complete this form and mail with payment to:**

KU Neurology  
3599 Rainbow Blvd, MS 2012  
Kansas City, KS 66160  
ATTN: Kelly Lyons, PhD

Call 913-588-7159  
Fax 913-588-6920  
Email [Kelly.Lyons@att.net](mailto:Kelly.Lyons@att.net)

Title \_\_\_\_\_ ( Mr., Mrs., Ms., Dr.)  
Email \_\_\_\_\_  
Name \_\_\_\_\_  
Specialty \_\_\_\_\_  
Degree \_\_\_\_\_ # Neuromuscular patients followed \_\_\_\_\_  
Address \_\_\_\_\_  
City, State, Zip \_\_\_\_\_  
Daytime phone \_\_\_\_\_

Special Accommodation

If you will need special accommodation, please mark the box above, and a representative of the course will contact you.

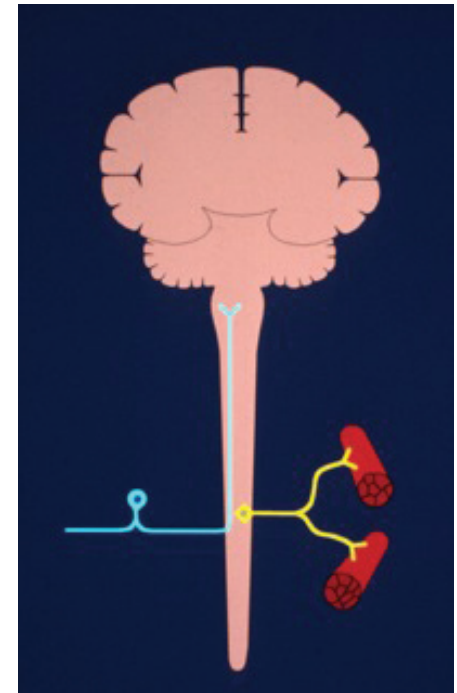
### **CANCELLATION POLICY**

KU Continuing Education reserves the right to cancel the Neuromuscular Review Course and return all fees in the event of insufficient registration. The liability of the University of Kansas is limited to the registration fee. The University of Kansas will not be responsible for any losses incurred by registrants, including but not limited to airline cancellation charges or hotel deposits.

Kansas University Neurological Foundation  
3599 Rainbow Blvd., Mailstop 2012  
Kansas City, KS 66160

# NEUROMUSCULAR REVIEW COURSE 2015

*Sponsored by the  
University of Kansas Medical Center  
Departments of Neurology and  
Continuing Education and  
Professional Development*



**Saturday, August 29, 2015**

JW Marriott Houston  
5150 Westheimer Road  
Houston, TX 77056  
713-961-1500

[www.kumc.edu/neurology](http://www.kumc.edu/neurology)

## OVERVIEW

The Neuromuscular Review Course is presented by leading neurologists specializing in neuromuscular disorders and provides an up to date review of clinical issues related to the diagnosis and treatment of neuromuscular diseases.

## TARGET AUDIENCE

This program is designed for neurologists and other physicians treating neuromuscular disorders.

## LEARNING OBJECTIVES

After this program, participants should be able to:

- 1) Recognize the patterns of clinical presentation for muscle and nerve disease and determine the most appropriate laboratory tests and treatments based on the clinical pattern.
- 2) Identify the clinical phenotypes of peripheral neuropathies and how these phenotypes can dictate the appropriate laboratory evaluation as to the etiology of the peripheral neuropathy.
- 3) Review the electrodiagnosis of common and uncommon entrapment neuropathies and radiculopathies and discuss their management.
- 4) Recognize the diverse presentations of immune neuropathy and distinguish them from a number of untreatable neuropathies. Discuss the concept of diagnostic certainty in immune neuropathies and current treatment strategies for classic CIDP, Lewis Sumner syndrome, multifocal motor neuropathy and distal acquired demyelinating neuropathy.
- 5) Discuss the symptoms of neuropathic pain, management guidelines and its practical management.
- 6) Review the different clinical presentations of motor neuron disease. Discuss recent updates in clinical practice including recent quality measures. Understand results of recent clinical trials and direction of ongoing studies.
- 7) Summarize the evaluation and treatment of acquired muscle disorders and review auto antibodies.
- 8) Review the approach to the evaluation and treatment of inherited muscle disorders.
- 9) Identify new tests for diagnosing myasthenia gravis (MG) in patients who are acetylcholine receptor antibody negative. Learn new classification grading and monitoring systems for MG research studies. Discuss the use of thymectomy for the treatment of MG, new drugs for treating MG, and ongoing clinical research.

## AGENDA

8:00 – 8:25
<b>Registration and Continental Breakfast</b>
8:25 – 8:30
<b>Introduction</b>
8:30 – 9:15
<b>Clinical Approach to Neuromuscular Disorders</b>
9:15 – 9:55
<b>Laboratory Testing in Neuromuscular Disorders</b>
9:55 – 10:35
<b>Challenges in Entrapment Neuropathies</b>
10:35 – 10:50 - Break
10:50 – 11:30
<b>Diagnosis &amp; Management of Immune Mediated Polyneuropathies</b>
11:30 – 12:10
<b>Clinical Approach to Painful Neuropathy</b>
12:10 – 1:00 - Lunch
1:00 – 1:30
<b>Motor Neuron Disease</b>
1:30 – 2:00
<b>Acquired Muscle Disorders</b>
2:00 – 2:30
<b>Genetic Muscle Disorders</b>
2:30 – 3:00
<b>Neuromuscular Junction Disorders</b>
3:00 – 3:45
<b>Case Vignettes/Questions &amp; Answers</b>
3:45 – 3:50 - Closing Remarks

## COURSE SPONSORS

### PLATINUM

NuFactor

### SILVER

Baxter  
Mallinckrodt  
Octapharma

### GOLD

CSL Behring  
Genzyme/Sanofi  
Grifols

### BRONZE

Catalyst

## FACULTY

### Richard J. Barohn, MD

Gertrude & Dewey Ziegler Professor and  
Chairman of Neurology, University Distinguished  
Professor & Vice Chancellor for Research  
University of Kansas Medical Center  
Kansas City, Kansas

### Mazen M. Dimachkie, MD

Professor of Neurology  
Director, Neurophysiology Division  
Director, Neuromuscular Section  
University of Kansas Medical Center  
Kansas City, Kansas

### Jonathan S. Katz, MD

Director, Neuromuscular Disease Clinics  
Forbes Norris ALS/MDA Center  
California Pacific Medical Center  
San Francisco, California  
Adjunct Professor of Neurology  
University of Kansas Medical Center

### Todd D. Levine, MD

Co-Director of ALS Center  
Phoenix Neurological Associates  
Clinical Assistant Professor of Neurology  
University of Arizona, Phoenix, Arizona  
Adjunct Professor of Neurology  
University of Kansas Medical Center

## ACCREDITATION

All participants are required to sign attendance rosters at the beginning of the program. A certificate of completion will be provided to all activity participants based on documentation of actual attendance time, and payment in full. If you are not paid in full your certificate will be mailed to you upon receipt of payment.

**Physicians:** The University of Kansas Medical Center Office of Continuing Medical Education is accredited by the Accreditation Council for Continuing Medical Education to provide continuing medical education for physicians.

The KU Medical Center Office of Continuing Medical Education designates this live activity for a maximum of 6 *AMA PRA Category 1 Credits*<sup>™</sup>. Physicians should claim only the credit commensurate with the extent of their participation in the activity.

Endorsed by:

