

THE 3<sup>RD</sup> ANNUAL  
DIVERSITY AND INCLUSION SYMPOSIUM

*HEALTH LITERACY:  
FROM PATIENT TO PRACTITIONER*

TUESDAY, MARCH 26, 2019

AD ASTRA ROOM, HEB

7:30 A.M.-3:30 P.M.

## FACULTY LEAD SPOTLIGHT

Each Diversity and Inclusion Symposium's curriculum is developed by a faculty lead. The faculty lead helps guide the direction of the session planning, assists with finding presenters, and presents at the symposium. The planning committee is thankful for all of the content assistance the faculty lead gives to the symposium.

The 2019 faculty lead for *Health Literacy: From Patient to Practitioner* is

**Crystal Y. Lumpkins, PhD, MA**

Associate Professor, Department of Family Medicine Research Division  
University of Kansas School of Medicine

Past Symposium Faculty Leads

*2018 Keeping Your Heart In Care: Cultural Experiences in Palliative Care and Beyond*

**Christian Sinclair, MD, FAAHPM**

Assistant Professor, Division of Palliative Medicine  
Department of Internal Medicine  
University of Kansas School of Medicine

*2017 Refugees in the Health System*

**Martha Baird, PhD, APRN, CTN-A**

Assistant Professor  
University of Kansas School of Nursing

**Joseph LeMaster, MD, MPH**

Associate Professor, Department of Family Medicine  
University of Kansas School of Medicine

## SCHEDULE OF EVENTS

7:30 a.m. Registration and Continental Breakfast

8:00 a.m. Welcome Remarks

**Abiodun Akinwuntan, PhD, MPH, MBA**

Professor of Physical Therapy and Rehabilitation Science  
Dean, School of Health Professions  
University of Kansas Medical Center

8:05 a.m. Health Literacy: 101

**Kristie Hadden, PhD**

Executive Director, Principal Investigator, Center for Health Literacy  
Associate Professor, College of Medicine, Division of Medical Humanities  
University of Arkansas for Medical Sciences

The session will provide an overview of health literacy basics.

9:00 a.m. Perspectives on Health Literacy: Research Panel Discussion

**Moderated by Crystal Y. Lumpkins, PhD, MA**

Associate Professor  
Department of Family Medicine Research Division  
University of Kansas School of Medicine

**Joseph Pacheco, MPH**

Predocctoral Fellow in Health Policy and Management  
Center for American Indian Community Health

**Mugur Geana, MD, PhD**

Director  
Center for Excellence in Health Communication to Underserved Populations

This session will give a view of health literacy and research.

10:15 a.m. Break

10:30 a.m. Ethics and Health Literacy: A Case Study

**Carla Keirns, MD, PhD, MSc**

Assistant Professor of Medical Ethics, History and Philosophy of Medicine  
Assistant Professor, Division of Palliative Medicine, Department of Internal Medicine  
University of Kansas School of Medicine

This session will provide an understanding of ethics and health literacy.

11:15 a.m. Pharmacologic Perspectives: Health Literacy and Unconscious Bias

**Zahra Nasrazadani, PharmD, BCPS**

Emergency Medicine Clinical Pharmacist  
Salina Regional Health Center

This session will focus on pharmacologic perspectives relative to health literacy and unconscious bias.

## SCHEDULE OF EVENTS

### Lunch

12:00 p.m. Executive Vice Chancellor Greeting

**Robert D. Simari, MD**

Professor of Division of Cariology, Department of Internal Medicine  
Executive Dean, School of Medicine  
Executive Vice Chancellor  
University of Kansas Medical Center

12:15 p.m. Cultural and Language Considerations for Health Literacy

**Valeria Salinas Guerrero, MD candidate 2020**

Intern  
JUNTOS Center for Advancing Latino Health  
.....

**Emily Vardell, PhD**

Assistant Professor  
School of Library and Information Mangement  
Emporia State University  
.....

**Sarah Finocchiaro Kessler, PhD, MPH**

Associate Professor  
Department of Family Medicine Research Division  
University of Kansas School of Medicine

**Natabhona Mabachi, PhD, MPH**

Assistant Professor  
Department of Family Medicine Research Division  
University of Kansas School of Medicine

This session consists of three 25-minute presentations related to cultural and language considerations for health literacy.

1:45 p.m.

Keynote Address: Health Literacy and Healthcare Innovation:  
Integrating Health Literacy into Quality, Technology, and Care Delivery Models

**Kristie Hadden, PhD**

Executive Director, Principal Investigator, Center for Health Literacy  
Associate Professor, College of Medicine, Division of Medical Humanities  
University of Arkansas for Medical Sciences

This keynote address will focus on Dr. Hadden's experience incorporating health literacy and health innovation.

2:45 p.m.

Closing Remarks

## SPEAKER BIOGRAPHIES

Kristie Hadden, PhD

[khadden@uams.edu](mailto:khadden@uams.edu)



Dr. Kristie Hadden is the founder, executive director, and principal investigator for the UAMS Center for Health Literacy, where she conducts health literacy research and participates in health system policy initiatives to improve health by addressing health literacy in Arkansas and across the U.S. Dr. Hadden also oversees the outreach/training arm of the UAMS Center for Health Literacy, which provides health literacy services to UAMS, other health systems, health agencies and non-profits, and for-profit organizations. She is faculty in the UAMS College of Medicine and holds the Carl L. Nelson Endowed Chair for Creativity in Orthopaedics. She is Associate Professor in the Department of Medical Humanities and Bioethics and also holds secondary appointments in the colleges of public health, pharmacy, nursing, and health professions at UAMS. Dr. Hadden was trained in communication sciences and disorders from Radford University in Radford, Virginia, followed by a master's degree in speech-language pathology from UAMS. She practiced as a speech-language pathologist and augmentative communication specialist for ten years and then completed a PhD in Health Promotion and Prevention Research at UAMS. Since 2010, Dr. Hadden has published more than 40 peer reviewed scientific articles on health literacy and her research is supported by NIH and other funders. She has served as vice chair of the Partnership for Health Literacy in Arkansas and as an honorary fellow of the Arkansas Society of Public Health Educators.

Crystal Y. Lumpkins, PhD, MA

[clumpkins@kumc.edu](mailto:clumpkins@kumc.edu)



Dr. Crystal Y. Lumpkins, is an Associate Professor at the University of Kansas School of Medicine in the Family Medicine Research Division and Assistant Director of Resident Research. She also holds courtesy faculty appointments with the Department of Preventive Medicine and Public Health at KUMC and the William Allen White School of Journalism and Mass Communications and School of Social Welfare at KU-Lawrence.

Community and patient engagement are also core parts of the Department of Family Medicine Research Division's mission and goals and exemplify the research that Dr. Lumpkins conducts. Her current and primary research interests are in comparative effectiveness research, medical education communication, health literacy and evidence-based health communication targeted to minority and underserved populations. Her research is primarily community driven where she follows community based participatory research principles and approaches to engage Kansas and Missouri patient populations to address health inequities and cancer disparities.

In addition to her research efforts within the department, she serves as an Associate Editor of the academic journal *Ethnicity & Health*, editor of the *Society of Behavioral Medicine's Outlook* and is actively engaged with other research and training projects within the Department of Preventive Medicine and the School of Nursing.

Dr. Lumpkins received her doctorate from the University of Missouri-Columbia in 2007; she also holds a dual Master's Degree in Media Communications and Management from Webster University, St. Louis, Missouri.

## SPEAKER BIOGRAPHIES

Joseph Pacheco, MPH  
[cdaley@kumc.edu](mailto:cdaley@kumc.edu)



Joseph Pacheco is an American Indian-Latino researcher at KUMC pursuing a PhD in Health Policy. He received a Bachelor of Science in pre-profession zoology from Northwest Missouri State University in Maryville, MO. After graduating he was unsure of his next step. Mr. Pacheco knew he wanted to help others better their health, but was not sure of the best route for him to do so. After talking to his family and trusted advisors, Mr. Pacheco knew that pursuing a Master of Public Health (MPH) would best suit his aspirations. In his search to learn more about public health, Mr. Pacheco was able to meet Dr. Christine Daley who explained the great things the Center for American Indian Community Health (CAICH) has accomplished and how they use community-based participatory research to involve community members in all aspects of their research. He was able to shadow a few of Dr. Daley's staff members for a week and get hands on experience on the day-to-day tasks at CAICH. Mr. Pacheco applied for and was awarded the Susan G. Komen for the Cure fellowship which gave him the opportunity to join Dr. Daley's team at CAICH, while working towards his MPH. He was able to begin working to improve the health of his local Native community right way. After earning his MPH, he has been able to continue working at CAICH as a Program Manager for a web-based smoking cessation study. Mr. Pacheco has also been able to mentor a new cohort of Native MPH students at KUMC. He is currently pursuing a PhD in Health Policy and Management at the University of Kansas Medical Center. He serves as Program Manager for a web-based smoking cessation study (based on All Nations Breath Of Life) under the guidance of Dr. Won Choi and Dr. Christine Daley.

Mugur Geana, MD, PhD  
[geanam@ku.edu](mailto:geanam@ku.edu)



Mugur V. Geana is Associate Professor of strategic communication at the William Allen White School of Journalism and Mass Communications; he is also the Director of the Center for Excellence in Health Communication to Underserved Populations, and Director of the Health Communication Research Shared Resource for the KU Cancer Center. Dr. Geana founded the Experimental Research Media Laboratory at the School of Journalism and Mass Communications, a major research resource for our graduate program. Dr. Geana is a member of the Diversity and Inclusion Action Group at the KU School of Journalism and Mass Communications and has conducted extensive research on underserved populations and health. Dr. Geana is co-inventor of Treepple, a platform for the delivery of personally tailored health news and information. Dr. Geana teaches strategic communication campaigns at undergraduate level and research theory and methods at graduate level. He is the recipient of the prestigious 2011 Baskett-Mosse National Research Award from the Association for Education in Journalism and Mass Communication, as well as other local and regional awards and citations.

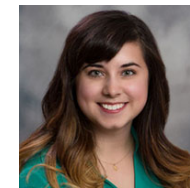
## SPEAKER BIOGRAPHIES

Carla Keirns, MD, PhD, MSc  
[ckeirns@kumc.edu](mailto:ckeirns@kumc.edu)



Dr. Keirns is assistant professor of medical ethics and palliative care at the University of Kansas School of Medicine in Kansas City. She practices palliative medicine and provides clinical ethics consultation at the University of Kansas Hospital, teaches ethics at KU's medical school, and does research at the intersection of history, policy, and ethics in the areas of end of life care and health disparities.

Zahra Nasrazadani, PharmD, BCPS  
[znasrazada@srhc.com](mailto:znasrazada@srhc.com)



Dr. Nasrazadani serves as the Emergency Medicine Clinical Pharmacist at Salina Regional Health Center. She received her Doctor of Pharmacy degree from the University of Kansas, completed a PGY1 Pharmacy Residency at SRHC, and holds a teaching certificate through the University of Missouri - Kansas City. She serves as the primary preceptor for the Emergency Medicine pharmacy rotation.

Zahra holds additional certifications in BLS, ACLS, and PALS, and has completed the National Incident Management System (NIMS) FEMA training program. She is the pharmacist representative of the Emergency Department, Stroke, and Chest Pain committees and serves as the secretary for the hospital's Diversity Committee. She participates in numerous community engagement activities including first responder education, emergency preparedness training, and outreach aimed at increasing the involvement of young women in STEM fields.

Valeria Salinas Guerrero, MD candidate 2020  
[vsalinasguerrero@kumc.edu](mailto:vsalinasguerrero@kumc.edu)



Valeria Salinas was raised in Chicago and attends medical school at the Universidad Autónoma del Estado de Hidalgo in Mexico where she was born. After completing the core curriculum, she spent a year in the General Hospital of the City of Pachuca completing her clinical electives. During this time, she assisted in the diagnosis and treatment of patients. Currently, she is completing a one-year social service internship working with JUNTOS-Center for Advancing Latino Health at the University of Kansas Medical Center. She supports ongoing community-based participatory research studies, such as the Latino Immigrant Health project and the JUNTOS Against Cancer initiative. Additionally, Val is a lifestyle coach with the national CDC Diabetes Prevention Program and facilitates a culturally tailored curriculum in Spanish to Latino participants at risk for developing type 2 diabetes. Val also mentors students from F.L. Schlegle High School in becoming anti-tobacco advocates and part of the first Tobacco-free generation. Her professional goal is to serve as an emergency medicine physician and to utilize her bi-cultural experiences to make a positive impact in the health outcomes of vulnerable and underserved populations in the United States.

## SPEAKER BIOGRAPHIES

Emily Vardell, PhD  
[evardell@emporia.edu](mailto:evardell@emporia.edu)



Emily Vardell is an Assistant Professor in the School of Library and Information Management at Emporia State University. She teaches graduate courses on the foundations of library and information science, research methods, reference, consumer health, and health sciences librarianship. Her research interests are in the area of health information behavior with a focus on health insurance literacy and how people make health insurance decisions. Dr. Vardell earned her PhD from the School of Information and Library Science (SILS) at the University of North Carolina at Chapel Hill in 2017 and her Master of Library Science degree from Texas Woman's University in 2007. She began her medical librarian career as a National Library of Medicine Associate Fellow and then served as Director for Reference and Education at the Louis Calder Medical Library at the University of Miami. Her first book *The Medical Library Association Guide to Answering Questions about the Affordable Care Act* was published in 2015 by Rowman & Littlefield.

Natabhona Mabachi, PhD, MPH  
[nmabachi@kumc.edu](mailto:nmabachi@kumc.edu)



Dr. Mabachi completed her doctoral training in Communications Studies with a focus in Health Communication at the University of Kansas, Lawrence Kansas. Dr. Mabachi works in both the academic and community settings using her expertise in community based participatory research (CBPR), qualitative research methods, evaluation, and health communication to address a variety of health topics among vulnerable and underrepresented populations both locally in Kansas City and internationally in East Africa.

Areas of focus include prevention of mother to child HIV transmission, improving Cervical Cancer screening and treatment, Community level Sexual Assault Prevention and Policy change and Access to Healthy Foods. Dr. Mabachi also conducts medical education research designed to address health inequities arising from the hidden curriculum, and implicit biases in care provision and decision making.

Dr. Mabachi works in collaboration with communities and multi-disciplinary teams to close the gaps that create health inequities through research, education, and outreach.

Sarah Finocchario Kessler, PhD, MPH  
[skessler2@kumc.edu](mailto:skessler2@kumc.edu)



Dr. Finocchario Kessler completed her doctoral training in International Public Health at the Johns Hopkins Bloomberg School of Public Health. Her active studies focus on developing, evaluating, and adapting mHealth interventions like the HIV Infant Tracking System (HITSsystem) to improve early infant diagnosis (EID) of HIV, prevent perinatal HIV transmission among pregnant women, and pilot new point of care HIV testing strategies at birth in Kenya.

## SUGGESTED HEALTH LITERACY ONLINE RESOURCES

**University of Arkansas for Medical Sciences Center for Health Literacy**  
<https://healthliteracy.uams.edu/>

**Centers for Disease Control and Prevention**  
<https://www.cdc.gov/healthliteracy/learn/Resources.html>

**American Speech-Language-Hearing Association**  
[https://www.asha.org/slp/health\\_lit\\_resources/](https://www.asha.org/slp/health_lit_resources/)

**Agency for Healthcare Research and Quality**  
<https://www.ahrq.gov/topics/health-literacy.html>

**Communicate Health**  
<https://communicatehealth.com/about-health-literacy/resources/>

**Health Resources & Services Administration**  
<https://www.hrsa.gov/about/organization/bureaus/ohe/health-literacy/index.html>

**Duke University Medical Center Library & Archives**  
<https://guides.mclibrary.duke.edu/healthliteracy/assessment>

**Boston University's Health Literacy Tool Shed for Research**  
<https://healthliteracy.bu.edu/>

**Kentucky Hospital Association**  
<https://www.kyha.com/health-literacy-resources>

**Community Health Association of Mountain/Plains States**  
<http://championline.org/tools-products/quality-improvement-resources/health-literacy-resources>

**From Coverage to Care**  
<https://go.cms.gov/c2c>

**C MedlinePlus Consumer Health Website**  
<https://medlineplus.gov/>





NOTES

NOTES



## SPONSORS

Thank you for helping to make the Diversity and Inclusion Symposium possible.

Office of International Programs  
EVC's Diversity and Inclusion Cabinet Programming Sub-Committee  
EVC's Diversity and Inclusion Cabinet  
Office of Continuing Education  
Area Health Education Centers

## SPECIAL THANKS

3<sup>rd</sup> Annual Diversity and Inclusion Symposium Planning Committee